

VEENA MEHROTRA* and N. K. GUPTA

Department of Zoology, Panjab University
Chandigarh, 160014 Panjab, India

On the status of "*Rhytidodooides intestinalis* Price, 1939"
of Caballero 1954 (*Trematoda*, *Rhytidodidae*)

O stanowisku taksonomicznym "*Rhytidodooides intestinalis*
Price, 1939", przywry określonej przez Caballero 1954

Abstract

MEHROTRA V., GUPTA N. K. 1978. On the status of "*Rhytidodooides intestinalis* Price, 1939" of Caballero 1954 (*Trematoda*, *Rhytidodooidae*). *Acta parasit. pol.* 25, 207-210.

Rhytidodooides intestinalis as reported and determined by CABALLERO 1954 is considered different from *Rhytidodooides intestinalis* Price, 1939, but identical with a trematode recorded by the authors in *Chelone mydas*. The name *Rhytidodooides pricei* sp.n. is proposed to accomodate the Caballero's and the present trematodes.

CABALLERO 1954 recorded a trematode specimen from the duodenum of *Chelone mydas* (L.) from the Island Chepillo, Panama, and identified and redescribed it as *Rhytidodooides intestinalis* Price, 1939. The present authors also obtained a single specimen from the intestine of the same host from the Gulf of Mannar (Pamban, Tamil Nadu) which resembles that of Caballero in all aspects. Both these specimens show deviations from the original description of *R. intestinalis* given by Price 1939 (based on two specimens recorded from the same host from U.S.A.). In them, the oral sucker is considerably larger than the ventral sucker (the latter pre-equatorial in position), the suckers ratio being 1 : 1.66 × 1 : 1.9 (according to Caballero) and 1 : 1.5 × 1 : 2 (in present material); the oesophagus is relatively long, the ratio of its length to that of the body being 1 : 3.62 in Caballero's specimen (in which the body is 3.121 mm long by 0.448 mm wide) and 1 : 3.42 in the present form (which is 2.378 mm long by 0.442 mm wide across the region of the gonads) and the vitellaria of the two sides meet medially in the post-testicular zone, besides meeting in the oesophageal region.

* Present address: Assistant Professor, Division of Biosciences, Himachal Pradesh University, Simla-5, India.

Address for correspondence: Dr. N. K. Gupta, Professor of Parasitology, Zoology Department, Panjab University, Chandigarh-160014 Panjab, India.

VIGNA MISHRA* and N. K. Gupta

Department of Zoology, Punjab University,
Chandigarh, 160034 Punjab, IndiaOn the status of "*Rhytidobdellus intestinalis* Price, 1939"
of Caballero 1954 (*Trematoda*, *Rhytidobdellidae*)O stanowisku taksonomicznym "*Rhytidobdellus intestinalis*
Price, 1939", przywoly określonej przez Caballero 1954.

Abstract

MISHRA V., GUPTA N. K.: 1978. On the status of "*Rhytidobdellus intestinalis*
Price, 1939" of Caballero 1954 (*Trematoda*, *Rhytidobdellidae*). *Acta parasit.* vol.
25, 207-210.

Rhytidobdellus intestinalis as reported and described by CABALLERO 1954 is considered different from *Rhytidobdellus intestinalis* Price 1939, but identical with a trematode recorded by the authors in Chelone squid. The name *Rhytidobdellus pricei* sp. n. is proposed to accommodate the Caballero's and the present material.

CABALLERO 1954 recorded a trematode specimen from the duodenum of *Chelone mydas* (L.) from the Island Cepido, Panama, and identified and redescribed it as *Rhytidobdellus intestinalis* Price, 1939. The present authors also obtained a single specimen from the intestine of the same host from the Gulf of Maricao (Pampan, Tarrif Nalut) which resembles that of Caballero in all aspects. Both these specimens show deviations from the original description of *R. intestinalis* given by Price 1939 (based on two specimens recorded from the same host from U.S.A.). In them, the oral sucker is considerably larger than the ventral sucker (the latter pre-equatorial in position), the suckers ratio being 1:1.66+1:1.9 (according to Caballero) and 1:1.5+1:2 (in present material); the oesophagus is relatively long, the ratio of its length to that of the body being 1:3.62 in Caballero's specimen (in which the body is 3.823 mm long by 0.448 mm wide) and 1:3.42 in the present form (which is 2.378 mm long by 0.442 mm wide across the region of the gonads) and the vitellaria of the two sides meet medially in the post-testicular zone, besides meeting in the oesophageal region.

* Present address: Assistant Professor, Division of Biosciences, Bharathiar Punjab University, Sadoh, India.

Address for correspondence: Dr. N. K. Gupta, Professor of Parasitology, Zoology Department, Punjab University, Chandigarh 160034 Punjab, India.

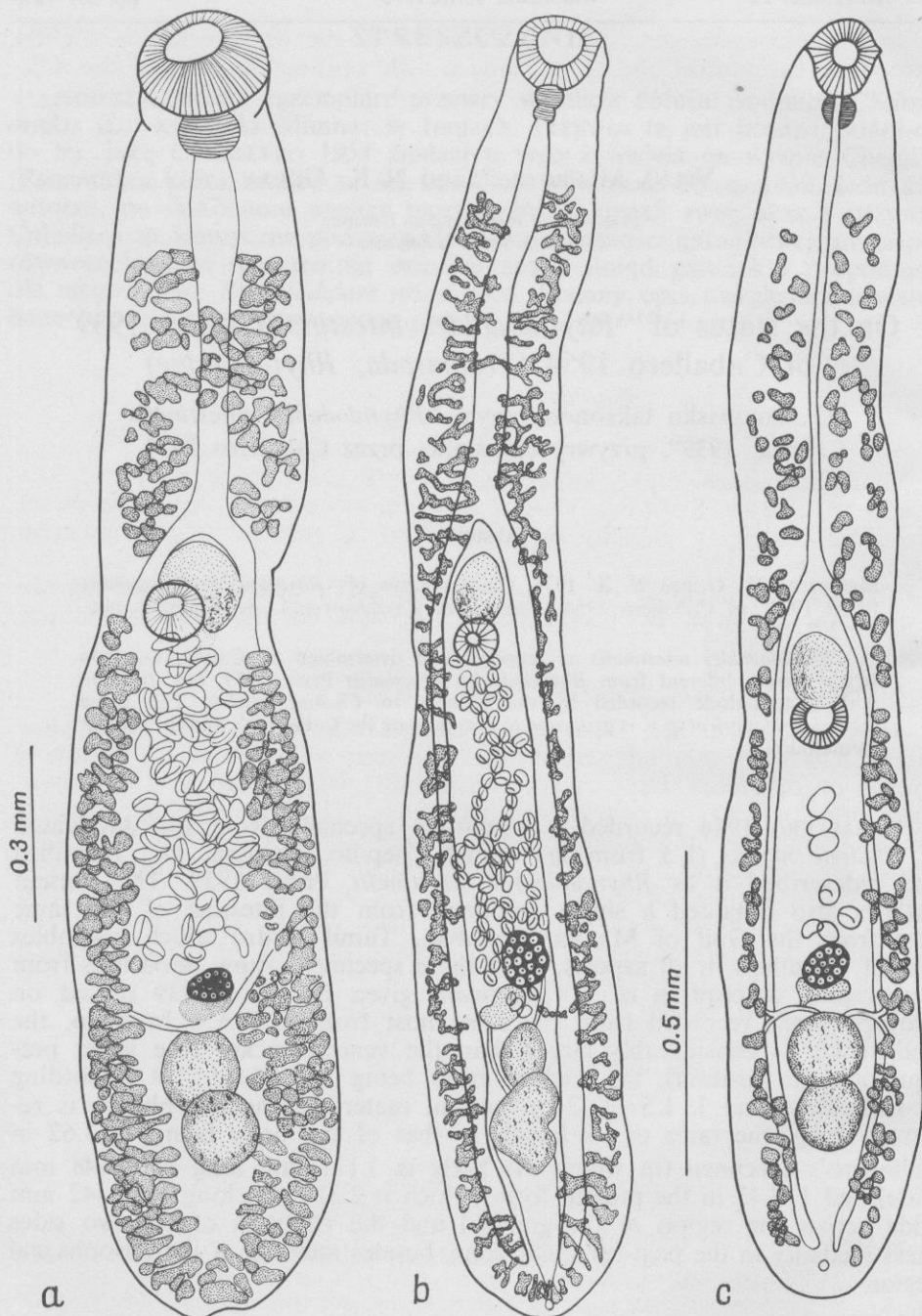


Fig. 1. a — *Rhytidodoides pricei* sp.n. (= *R. intestinalis* Price, 1939 of Caballero 1954), present specimen whole mount (ventral view) (a), and resketched from the literature after Caballero 1954 (for comparison) (b). *Rhytidodoides intestinalis* Price, 1939, resketched from the literature, after Price 1939 (for comparison) (c).

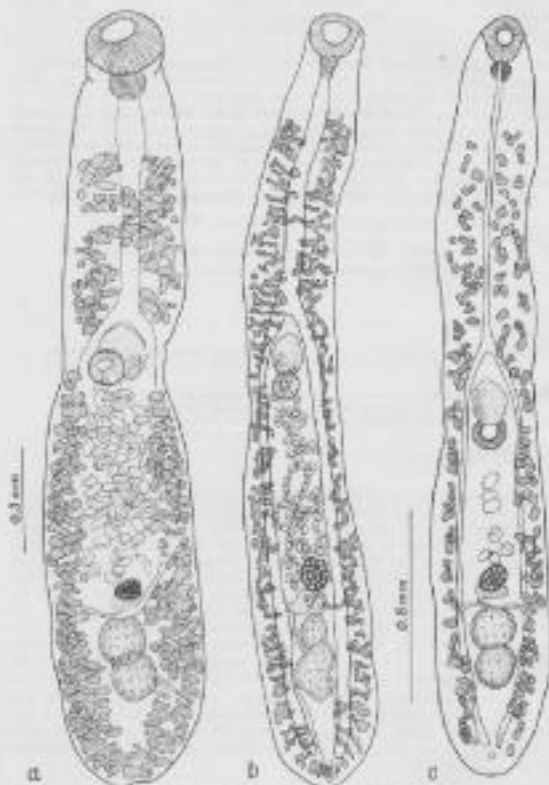


Fig. 1. — *Brachyolothus japonicus* (n. sp.) K. Sawahata, Proc. 1976 of Colloquium 1976 (recent specimen, whole female, ventral view) (a), and isolated from the Laccaria after 14 months (1914) (the holotype) (b). *Brachyolothus japonicus* (Proc. 1976) isolated from the Laccaria after Proc. 1976 (the holotype) (c).

In the specimens described by PRICE 1939, the oral sucker is slightly larger than the ventral, the latter being a little post-equatorial and the ratio of the suckers, 1:1.06×1:1.13; the ratio of the length of the oesophagus to that of the body is 1:2.53–2.73; and the vitellaria of the two sides coalesce in the oesophageal region only (Fig. 1 c).

The differences discussed above cannot be taken as intraspecific variations. In the authors' opinion, therefore, "*R. intestinalis*" as reported by CABALLERO 1954 is different from *R. intestinalis* of PRICE 1939 and represents a separate species of the genus *Rhytidodoides*, to which the name *Rhytidodoides pricei* sp. n. is proposed.

Rhytidodoides pricei sp. n.

Differential diagnosis

Oral sucker considerably larger than ventral sucker, suckers ratio 1:1.5–1.66×1:1.9–2 (V. S.:O. S.). Ventral sucker pre-equatorial. Vitellaria of the two sides coalescing mesially in oesophageal as well as in post-testicular region.

The specific diagnosis of *R. pricei* sp. n. given below is based on the description, as given by CABALLERO 1954, and on the present authors' observations.

Specific diagnosis

Rhytidodidae Odhner, 1926, genus *Rhytidodoides* Price, 1939. Body elongate, 2.378–3.121 mm long by 0.442–0.448 mm wide across the region of gonads or of uterus. Oral sucker considerably larger than ventral sucker, latter pre-equatorial in position, suckers ratio 1:1.5–1.66×1:1.92. Pharynx small. Oesophagus long. Intestinal caeca slender, tandem, near posterior end. Cirrus sac anterodorsal to ventral sucker. Genital pore postbifurcal. Ovary pretesticular. Mehlis' gland between ovary and anterior testis. Uterus intra-caecal, between ovary and ventral sucker. Eggs large. Vitellaria consisting of large and mainly elongate follicles, meeting mesially in the oesophageal as well as in post-testicular region.

Host: *Chelone mydas* (L.).

Location: Intestine, duodenum.

Localities: Panama and India.

REFERENCES

- CABALLERO E. D. 1954. Helminths of the República de Panamá. X. Algunos trematodes de *Chelone mydas* (L.) tortuga marina comestible del Océano Pacifico del Norte. *An. Esc. nac. Cienc. biol., Méx.*, 8, 31–58.
- ODHNER T. 1926. *Protofasciola* n. g., ein Prototypus des grossen Laberegels. *Ark. Zool.*, 18, A, (20), 1–7.
- PRATT H. S. 1914. Trematodes of the loggerhead turtle (*Caretta caretta*) of the Gulf of Mexico. *Archs Parasit.*, Paris, 16, 411–427.
- PRICE E. W. 1939. A new genus and two new species of digenetic trematodes from a marine turtle. *Proc. helminth. Soc. Wash.*, 6, 24–25.

In the specimens described by Price 1939, the oral sucker is slightly larger than the ventral, the latter being a little post-equatorial and the ratio of the suckers, 1:1.05-1:1.13; the ratio of the length of the oesophagus to that of the body is 1:2.33-2.71; and the vitellaria of the two sides anterior in the oesophageal region only (Fig. 1c).

The differences discussed above cannot be taken as intraspecific variations, in the authors' opinion, therefore, "*R. mucronatus*" as reported by Caballero 1954 is different from *R. mucronatus* of Price 1939 and represents a separate species of the genus *Rhytidobolus*, to which the name *Rhytidobolus pricei* sp. n. is proposed.

Rhytidobolus pricei sp. n.

Differential diagnosis

Oral sucker considerably larger than ventral sucker, suckers ratio 1:1.5-1:1.66-1:1.9-2 (V, S: O, S). Ventral sucker pre-equatorial. Vitellaria of the two sides coalescing mesially in oesophageal as well as in post-testicular region.

The specific diagnosis of *R. pricei* sp. n. given below is based on the description, as given by Caballero 1954, and on the present authors' observations.

Specific diagnosis

Rhytidobolus Odhner, 1926, genus *Rhytidobolus* Price, 1939. Body elongate, 2.378-3.121 mm long by 0.442-0.448 mm wide across the region of gonads or of uterus. Oral sucker considerably larger than ventral sucker, linear pre-equatorial in position, suckers ratio 1:1.5-1.66-1:1.92. Pharynx small. Oesophagus long. Intestinal caeca slender, tandem, near posterior end. Cirrus sac anterodorsal to ventral sucker. Genital pore postifurcal. Ovary pretesticular. Melli's gland between ovary and anterior testis. Uterus intracanal, between ovary and ventral sucker. Eggs large. Vitellaria consisting of large and small elongate follicles, meeting mesially in the oesophageal as well as in post-testicular region.

Host: *Chelone mydas* (L.)

Location: Intestine, duodenum.

Localities: Panama and Italia.

REFERENCES

- CABALLERO E. D. 1954. Helminthes de la República de Panamá. X. Algunos trematodos de *Chelone mydas* (L.) con una nueva especie del género *Parabotul* del género *Bo*, *Rev. Inst. Cub. Invest. Zool.*, 2, 11-14.
- ODHNER T. 1926. *Prosthorosyncha* n. g. aus *Protogaster* der grossen Labyrinth. *Zool. Jb.*, 48, A, 208, 1-3.
- PRICE E. W. 1934. Trematodes of the leptocephalic family (Cercaria cercaria) of the Gulf of Mexico. *Arch. Protist.*, Paris, 10, 301-327.
- PRICE E. W. 1939. A new genus and two new species of digenetic trematodes from a marine turtle. *Proc. Internat. Soc. Parasit.*, 8, 24-25.

STRESZCZENIE

Autorzy znaleźli egzemplarz przywry w jelicie żółwia wodnego *Chelone mydas* (L.) z Zatoki Mannar w Indiach. Przywra ta jest bardzo podobna do tej, jaką CABALLERO 1954 znalazł u tego żywiciela na wyspie Chepillo (Panama), a którą uważał za *Rhytidoides intestinalis* Price, 1939. Jednakże autorzy, po dokonaniu analizy morfologicznej uznali swój okaz i przywrę Caballero za identyczne pod względem przynależności gatunkowej, uważając równocześnie, że reprezentują one nie znany dotąd gatunek i proponując dla niego nazwę *Rhytidoides pricei* sp.n. Podany opis uwzględnia również dane biometryczne, przytoczone przez CABALLERO 1954.

STRESZCZENIE

Autoryzy znaleźli egzemplarz przynury w jeziorze zółwym wodnego Chelove wsiada (L.) z Zatoki Mianmar w Indiach. Przynura ta jest bardzo podobna do tej, jaką CARALLERO 1954 znalazł u tego żywcała na wyspie Chelabo (Paznos), a którą uważał za *Abraxodonta monstrosus* Peice, 1939. Instrukcje autorzy, po dokonaniu analizy morfologicznej ułamki skóry okar i przynury Caballero są identyczne pod względem przynależności gatunkowej, uważając równocześnie, że reprezentują one ten sam rodzaj gatunek i proponując dla niego nazwę *Abraxodonta peicei* sp. n. Podany opis uwzględnia również dane biometryczne, przytoczone przez CARALLERO 1954.