

Regional Disparities in Poverty Incidence and Levels of Living in India

Amaresh Dubey and Nirankar Srivastav

I. Introduction

The objective of this paper is to investigate the inter-state and inter-regional disparities in poverty incidence and levels of living in the rural and urban sectors of India. It is established in the literature that the economic development process follows an inverted U-shape curve (Williamson, 1969). This implies that in the initial stages of economic development, inter-regional disparities tend to increase before declining again. Besides Williamson (1969), there are several researchers, e.g. Barro and Sala-i-Martin (1992), Sala-i-Martin (1996), who had tried to study regional disparities and their changes over time in the theoretical framework of "convergence". But the empirical evidence on regional convergence is mixed at best.

In India too there had been several attempts to study the changes in regional disparities (Mathur, 1983; Marjit and Mitra, 1996; Dasgupta et al., 1997; Ghosh et al. 1998). A common feature of these studies is that they use normalized state income as summary indicator of regional (state level) development. Most of these researchers do not find any evidence of regional convergence while some report an evidence of divergence.

Their results could be due to methodological problems that are inherent in the data that these researchers have used. First, the data used by these researchers is per capita state domestic product (PCSDP). The PCSDP is a summary indicator that does not take into account the distribution profile of the income over population. Secondly, the PCSDP data is not comparable over time in scope and coverage. Moreover, most of the studies are restricted to so-called major states in Indian union, thereby leaving out a large number of states and union territories from their calculations. Thirdly, some of the researchers, e.g.

Ghosh et al. (1998), have used CPIAL as the deflator to derive real SDP series. As it is, CPIAL is not a representative deflator even for the rural sector (Suryanarayana, 1996). Its appropriateness for the entire population is clearly questionable.¹

In this paper, we propose to analyse regional disparities using a more disaggregated data. It is known that there are significant variations in the agro-climatic conditions within the states. Therefore, a more disaggregated analysis of NSS region-wise indicators would be worth trying. In this paper we investigate whether regional disparities are also present in the incidence of poverty and, in consumption levels of the population. In this paper we look at the disparities across states and also in the rural and urban sectors of states. Next, we consider the regions within a state, and also the rural and urban sectors within each NSS region. Specifically, we concentrate on two sets of variables; average per capita consumption of the households and the poverty measures of the population in the geographical unit of interest.

Rest of the paper is organised as follows. In section two, we discuss the data and methodological issues. Section 3 deals with the regional disparities at state/region level. This is followed by the analysis of disparities among the regions divided into rural and urban regions in section 4. Conclusions and policy implications of the paper are given in section 5.

II Data and Methodological Issues

Data

In this paper we use data from the socio-economic survey conducted by the National Sample Survey Organisation (NSSO) for two quinquennial rounds. The reference years are 1987–88 and 1993–94. During these two rounds of survey, the NSSO collected data on household level consumption expenditure for the agriculture year i.e. from July to June. In order to cover the entire territory in the Indian union, the country is divided into 78 NSS regions in rural and urban sectors separately. The details on number of regions formed in different states, abbreviations and state and region codes are given Appendix 1.

The socio-economic survey data of NSS has its reputation for reliability and suitability for the type of study at hand. This data set has two major advantages; firstly, this is in the form of unit record or household level. Secondly, this is the only detailed data that covers almost entire territory of India.² All the states and union territories are being referred to, as states for the sake of convenience, which are 32 in numbers.

Methodology

The official poverty incidence in India is reported at the state level, divided in to rural and urban sectors in a number of studies, e.g., GOI (1993, 1997 and 2001). But, in the situation where there exists substantial inter and intra-state differences in the level of development and incidence of poverty, the state level analysis do not provide enough insight in to the process leading to change in poverty incidence. As pointed above, we wanted to carry out the analysis at a more disaggregated level. Therefore, we use sub-state (NSS Region) level poverty incidence in the rural and urban sector. It is worth mentioning that many bigger states in India are divided in more than one NSS regions, for example, the Madhya Pradesh is divided in to seven number of regions, whereas, Maharashtra in six and Uttar Pradesh and Gujarat are divided into five regions each (see Appendix 1 for details). This enables us to do the regional disparity analysis at fairly disaggregated level.

Level of living and poverty line

For measuring welfare of the population, traditionally per person income or expenditure has been used. The consumption expenditure is preferred indicator of standard of living and in turn indicates the welfare at the household level. To capture this the average per capita consumption expenditure (APCTE) is estimated for entire population disaggregated by states and NSS regions for rural and urban sectors separately.

The poverty norm, z , which we use in this paper, is the Official Poverty Line (OPL) based on the official norm that was derived by the Task Force in 1979 (GOI, 1979). The all India Poverty Norm for rural and urban sector was derived using food energy intake method. The task force estimated that on an average a representative Indian needs 2435 kcal in the rural sector and 2095 kcal in the urban sector per day. The cost of these many calories worked out to be Rs 49.07 and Rs 56.64 per person at 1973–74 prices for the rural and urban sector, respectively, assuming that education and health care will be provided by the state.³ The Expert Group (GOI, 1993) recommended that the all India poverty norm is to be deflated using state-wise price indices keeping the average calorie requirement fixed.⁴ We use the state-wise poverty line that were derived by the Expert Group (1993) and reported in GOI (1997).

It is to be noted that the GOI (1997) recommended that for smaller states and union territories, the poverty ratios of neighbouring larger states be adopted, as the price data for these States and UTs are not available. For example, the poverty ratios of Assam have been assigned to remaining six North-eastern states and Sikkim. The modification that we introduced in this paper is that we used the poverty line of the neighbouring larger states (in place of poverty ratios as suggested in GOI (1997)) and expenditure distribution of the concerned states to calculate the poverty incidence.

Poverty measures

The simplest index of poverty is Head Count Ratio (HCR), which is defined as

$$(1) \quad HCR = \frac{q}{n} * 100$$

where the population consists of n individuals with per capita total expenditure (PCTE), y , ranked in ascending order. q is the number of persons who are below the poverty line ' z '. HCR gives the proportion of the population that has PCTE below the poverty line.

One of the main shortcomings of HCR is that it is insensitive to the depth of poverty of the poor person, thus violating what Sen (1976), defined as the monotonicity axiom. This axiom ensures that any poverty index should increase if there is a drop in the income of any poor individually, *ceteris paribus*.

The Weighted Poverty Gap Index (PGI) satisfies the above axiom, which is defined as

$$(2) \quad PGI = \frac{1}{q \cdot z} \sum_{i=1}^q (z - y_i)$$

where, n , q , y_i and z are as defined above. But this measure is insensitive to income transfer against the poor, thus violating Sen's Weak Transfer Axiom—the requirement that any transfer of income from a poor person to any one richer should increase poverty, so long as no one crosses the poverty line as a result. There are several such measures described in the literature, which satisfy the transfer axioms. Foster, Greer and Thorbecke (1984) index (henceforth, FGT) has almost become standard in the literature for its simplicity and useful properties.⁵ FGT(α), a generalized index, is a normalized weighted sum of the poverty gaps of the poor, with weights given by those poverty gaps themselves raised to an appropriate power. The FGT index is defined as

$$(3) \quad FGT(\alpha) = \frac{1}{n \cdot z^\alpha} \sum_{i=1}^q (z - y_i)^\alpha, \alpha \geq 0$$

where, n , q , y_i and z are same as defined above. For $\alpha = 0$, the FGT(α) equals HCR, for $\alpha = 1$, the index equals PGI. For greater values of α , it satisfies the criteria of diminishing transfer sensitivity. In case of $\alpha = 2$, FGT index is defined as

$$(4) \quad FGT(2) = \frac{1}{n \cdot z^2} \sum_{i=1}^q (z - y_i)^2$$

The advantage of using weights independent of position in the distribution ensures decomposability of the index across different household types.

In this paper we have estimated all the three poverty indices, namely, HCR, PGI and FGT using FGT generalised index. Recall that for $\alpha = 0$, from equation

(3) we get HCR; for $\alpha = 1$ it yields PGI and for $\alpha = 2$ it is FGT as shown in equation (4).

Recall that we have access to unit record data on all the households surveyed by the NSS in the two rounds, 43rd and 50th. Consequently, the per capita consumption expenditure of every surveyed household is available and has been used to calculate all three poverty measures described above.

Average per capita monthly total expenditure

Average expenditure is considered to be a good summary indicator of the standard of living of population. In this paper we report the average expenditure calculated for three groups, entire population (APCTE), only the poor (APCTEP) and non-poor (APCTENP) separately at various level of disaggregation. The disaggregation is for all the states and all the NSS regions. Also, each state/NSS region is further considered in two sectors namely, rural and urban.

The NSSO collects the expenditure data at market prices. For comparing the change in average expenditure of 1993–94 over 1987–88, we deflated 1993–94 expenditure distribution at 1987–88 prices. The deflator that we have used in this paper is implicit price deflator derived from the official state-wise poverty line reported in GOI (1997).

Disparity measures

The measure of disparity that is used in this paper is coefficient of variation or CV. This is defined as

$$(5) \quad CoV = \frac{1}{\mu} \sqrt{\sum_{j=1}^m \frac{n_j}{n} (y_j - \mu)^2}$$

where, μ is the mean (expenditure or poverty measure as the case may be), n is total number of people equal to sum of n_j and y is once again welfare indicator, which is taken as APCTE for the population, APCTEP for the poor persons and APCTENP for the non-poor in our calculations. The coefficient of variation measures the degree of dispersion and variability of mean between two different groups/time points of the data set.

III Regional Disparities

Table 1 reports the state-wise poverty incidence (HCR) for the years 1987–88 and 1993–94. The all India HCR has declined from 39.31 to 35.95, which is about 8.5% during the above-mentioned period. During the same period the depth (PGI) and severity (FGT) declined at a significantly faster rate, 13.5 percent and 17.5 percent, respectively. Smaller states like Mizoram, Chandigarh, Manipur and

Himachal Pradesh and medium size states like Punjab and Haryana were showing low level of poverty incidence in 1987-88. Where as Bihar, Orissa, Pondicherry and Madhya Pradesh were having higher level of poverty.

In year 1993-94 poverty level has reduced in most of the states in India but there are some states that do not follow the trend. For example, Arunachal Pradesh, Assam, Bihar, Haryana, Himachal Pradesh, Manipur, Mizoram and Punjab are the states where incidence of poverty has in fact increased instead of declining. But increase in some of the states is only marginal. It is important to note that most of the states belong to North-eastern part of India where substantial poverty increase is observed. Ironically, Assam and Arunachal Pradesh⁶ have joined the list of four most poor states in the year 1993-94, where the remaining two states are Bihar and Orissa.

The table 1 also reports the poverty incidence for the rural and urban sectors of the states. Rural poverty was concentrated in the states like Bihar, Orissa, West Bengal and Pondicherry in the year 1987-88. We see a general trend in reduction of poverty in the rural sector in most of the states in India in the year 1993-94. The poverty incidence in the urban sectors was lowest among the smaller states like Mizoram, Meghalaya, Himachal Pradesh and Pondicherry in 1987-88. The poverty incidence has, in general, declined in the urban sector of almost all the states of India too except in the case of Manipur where poverty level has actually increased marginally from 6.52 percent to 6.89 percent during the reference period. The state-wise PGI and FGT are reported in table 2 and 3 respectively. These measures more or less follow the trend that we observed in case of HCR.

Tables 4, 5 and 6 report the region-wise poverty measures for 1987-88 and 1993-94 for rural and urban sectors for 77 NSS regions.⁷ At all India level 31 regions out of 74 comparable regions had poverty incidence above the national average in 1987-88. This declined to 26 in 1993-94. Similarly, in the rural sector number of regions reporting poverty incidence above the national average was 32 in 1987-88 that reduced to 26 in 1993-94. In the urban sector the number of regions reporting higher poverty levels than the national average were 36 and 35 in 1987-88 and 1993-94 respectively.

The above observations imply that there is overall reduction in the incidence of poverty at every level. It also implies that there could have been reduction in inter-regional disparities also. The reduction in inter-regional disparities appears to be favouring rural than urban sector (This issue is investigated in details below).

Besides the poverty measures, we are also interested in analyzing the changes in the welfare levels of the households at state and regional levels compared to at all India level. These calculations were done at the state level, rural and urban sectors of each state, NSS region level and for rural and urban sectors of each region for the reference years. These are reported in table 7 and 8 for states and table 9 and 10 for the regions.

APCTE was highest among the states like Delhi, Chandigarh, Nagaland, Mizoram and Punjab and lowest among the Orissa, Bihar, Madhya Pradesh,

Uttar Pradesh, Karnataka and Assam in that order in 1987–88. It is to be noted that APCTE was found lower in those states which are bigger in size with higher population. At all India level APCTE has grown from Rs 176.75 in 1987–88 to Rs 184.15 in 1993–94 at constant (1987–88) prices. This shows a significant rise in the average real consumption expenditure at national level.

If we arrange the states in descending order of APCTE (real) in 1993–94 and compare their relative positions in 1987–88, we find that Pondicherry has improved its rank from 19th to 13th, Karnataka from 28th to 22nd, Madhya Pradesh from 30th to 25th and West Bengal from 25th to 21st. These are the states, which also show relatively better performance in improving the average standard of living. On the other hand there are some states, which have depicted the relative poor performance on this account. Though in absolute sense their APCTE has gone up but their relative rank has gone down significantly. For example, Arunachal Pradesh that was having tenth highest APCTE at national level in 1987–88 has slipped down to 26th position in 1993–94. Similarly, Manipur has slipped from 17th to 27th, Mizoram from 5th to 11th, Nagaland from 3rd to 9th and Tripura from 15th to 19th. Incidentally, all these states belong to NER of India. This reflects slow growth of APCTE among Northeastern states in comparison to some other states of rest of India. One possible explanation could be that these states have very poor industrial base. As a result these states have not benefited from the opening-up of the economy.

Increase in APCTE does not always reveal the improvement of standard of living for all the households belonging to different expenditure classes, as it is insensitive to changes in the distribution of expenditure. In other words, we cannot say with certainty that by improving APCTE (as we noted earlier) would benefit poor and non-poor households equally. In order to capture this, in table 7 and 8 we have reported the APCTE for poor and non-poor separately for the years 1987–88 and 1993–94.

There are about nine states, which show lower APCTE for poor than national average Rs 95.94 in 1987–88 (Table 7). Out of these Andhra Pradesh, Orissa, Madhya Pradesh and Uttar Pradesh are the prominent states belong to this category. But, the APCTE for poor (rural) at all India level has increased by about 3 percent, from Rs 88.70 in 1987–88 to Rs 91.18 in 1993–94. This clearly shows some improvement in the consumption expenditure level of poor in the rural sector of most of the states. Similar trends are also observed for the urban sector where APCTEP increased by about 2.4 percent. During the same period the APCTE for non-poor has increased from Rs 229.10 to 232.48 (1.5 percent) at all India level (table 7 and 8). In urban sector, the increase was just about the same, less than 1.6 percent). The implication of these observations on regional inequality could be that for poor, there might be narrowing down of regional disparities. This might have some rural bias compared to urban areas.

These observations are further strengthened when we look at the shift in the distribution of population along the expenditure scale shown in figures 1 and 2. The figures clearly indicate the overall increase in the real consumption

expenditures at per capita household level for almost all segments of the population during 1987–88 to 1993–94 for both the rural and urban sectors. But this increase is more uniform and steady in the case of rural population than urban population. These trends were also followed while analyzing the data at sub state level reported in table 9 and 10.⁸

Relative performance over time

In this section we carry out two types of analysis in order to capture the extent of change in regional disparities among the states/regions over two time points, 1987–88 and 1993–94. First, we look at the regional disparities by calculating rank correlations and the coefficients of variation (CV) of all the three poverty measures, the HCR, PGI and FGT and the APCTE, APCTEP and APCTENP. Secondly, a differential band analysis is introduced to highlight the degree of poverty reduction within the regions during this period. This analysis provides us a disaggregated view of regional disparities. In this way, actually, we are intending to investigate within states and the regional disparity can be viewed with respect to other regions in the country, as well.

Regional disparities: rank correlation and coefficient of variation analysis

Table 11 and 12 report the rank correlation across the states/regions for poverty measures and for various consumption expenditure levels for two years. The strong positive rank correlation coefficient (0.84), when states/regions are arranged according to their respective HCR reveals that during this period there are not major changes in the relative positions of the states/regions. But the value of this coefficient is relatively lower for rural sector (0.76) compared to urban sector (0.92). This suggests that rural sector of some of the states improved their relative position on account of HCR.

Table 12 has the rank correlations of states/regions of APCTEs. The rank correlation of APCTEP supports the observation regarding improvement in the ranking of the states. The rank correlation of the regions, however, shows relative stability. In other words, the rank correlation of HCR and APCTEP in case of regions is same in the rural sector. In the urban sector, the ranking of states as well as regions is relatively stable when we consider the correlation in case of HCR. The stability of ranks among the states is maintained when we look at the rank of APCTEP. There is a lot happening, though, among the ranking of the regions where the coefficient has declined from 0.85 to 0.77. This implies that in some regions level of living of poor has improved.

Table 11 also reports the rank correlation of other two poverty measures, PGI and FGT, among the states as well as the regions. It is interesting to note that in the rural sector the correlation is highest for HCR (0.76) and lowest for FGT (0.64). It implies that there are several states, which have been able to raise the condition of the poorest households faster than others. The similar rank

correlation is observed in case of regions also but the gap in the correlation between HCR and FGT is relatively lower. The rank correlation of level of living of entire population (APCTE) and of non-poor (APCTENP) does not show much variability between states and regions. These observations need to be examined in greater detail.

This analysis is indicative of increasing regional disparities at state/region level. We have investigated this issue further by calculating the coefficient of variation (CV). The CV quantifies the degree of dispersion and variability of mean between two groups of data set. Table 13 reports the CV of the poverty measures for the states. The CV for urban is higher than rural sector, which shows the higher disparity on account of poverty measures in urban than rural sector among the states in 1987–88. We find the same trend in 1993–94. Comparing the result we notice that CV has remained constant over two periods for the states as a whole. However, it has increased from 43.70 to 46.62 for rural sector and from 52.89 to 56.85 for urban sector for HCR among the states. This indicates that there is some evidence of increase in regional disparities in both the rural and urban sectors of the states during this period.

Table 14 reports the CV of the poverty measures for comparable regions for the two years. We find a similar change in the CV in case of regions also. It could be seen that the difference in CV is more in case of regions (Table 14) than for the states (Table 13), for both the rural and urban sectors. This implies that the regional disparities have increased sharply among the regions than the states. Other interesting observation is that in the rural sector the CV of FGT has declined across the regions in 1993–94 compared to 1987–88. Exactly opposite is the case in case of urban regions. This could mean that in rural sector, the severity of poverty has declined where as it has increased in case of urban poor.

In table 15, we have reported the CV of APCTEs of the states for two years. The CV of APCTE was 41.96 in 1987–88 that increased to 52.72 in 1993–94 indicating a sharp increase in inter-state disparities. During the same period, there is only marginal increase in the rural sector but it is in the urban sector that recorded significant increase in the disparities. When we look at the APCTEP, we find that CV has declined marginally in rural sector where as it has remained unchanged in urban sector. In other words, the inter-state disparity among the poor does not show any deterioration during this period. Among the non-poor, CV remained almost same in rural sector. But in the urban sector, the CV of APCTENP recorded significant increase from 17.28 to 25.73.

Table 16 reports the CV of APCTEs at the region level. The calculated CV for all the three groups, APCTE, APCTENP and APCTEP for entire population and in the two sectors is similar to the observations recorded above in case of states.

In sum, if we divide the households into the poor and non-poor sections, we find that the increased disparity is among the non-poor persons only. But in the case of both the urban and rural poor the disparity on the basis of APCTEP, has

gone down as CV has in fact decreased. And this reduction, in inter state disparities is more in the case of urban than rural poor. This implies that increase in regional disparities is mainly due to increase in the disparity of APCTE for non-poor, whereas disparities on the basis APCTE have actually declined in the case of poor. As a matter of fact the Dubey and Gangopadhyay (1998) have reported that the average per capita consumption of the poor had actually increased significantly in 1993–94 over that of 1987–88. Thus, as far as the poor are concerned, their per capita consumption expenditure has become more homogeneous across regions and, the level is higher. This is a significant point. Some people maintain that in the nineties, the poor have become worse off, and the rich better off. The consumption expenditure data for 1993–94, compared to that of 1987–88, suggest otherwise.

Regional disparities: differential band analysis

The foregoing analysis of interregional disparities is based on variation in the rank correlation and coefficient of variation. The major limitation of this approach is that this gives the aggregate view of regional disparity. If we intend to find out the inter-regional (intra-state) disparity, then this approach is not of much help. In this section we introduce an approach where extent of regional disparity is categorized in differential bands for an in-depth analysis.

Recall that the all India HCR in the rural sector as measured by the OPL and given in Table 1, declined by 2.08 percentage points (i.e. 39.36 to 37.28). We now check the performance of each region against this national average. We define six bands, three below, and three above, the national average. If the (national) average reduction in poverty is denoted x , then keeping in mind that x is negative, define one band as the interval $(x + 0.5x, x)$, and a corresponding one as $(x, x - 0.5x)$. Similarly, define two other intervals as $(2x, x + 0.5x)$ and $(x - 0.5x, 0)$. The other two intervals are $(-\infty, 2x)$ and $(0, \infty)$. Similarly, we have defined six bands for the urban regions also. The all India urban HCR, as given in table 1, declined by 3.36 percentage points (i.e. 39.31 – 35.95) during the period. The corresponding six bands were defined and used for further analysis.

These six bands help us in understanding the extent and degree of increase or decrease of poverty incidence among the 74 NSS regions during the period 1987–88 to 1993–94. First band shows the regions where reduction in poverty incidence is more than two times of national average. Second band shows the regions where reduction in poverty is more than 1.5 times and less than double. Third band shows the reduction in poverty more than national average but less than 1.5 times of national average. Similarly, fourth band shows reduction in poverty less than national average but above than 0.5 times of national average and fifth band shows reduction in poverty but less than 0.5 times of national average. Finally, sixth band show those regions in which the poverty incidence has actually increased.

Table 17 reports the band-wise distribution of regions for rural and urban sectors. In the rural sector, in 52 out of 74 comparable regions (above 70 percent the incidence of poverty has declined. But 22 regions belonging to sixth band the incidence of poverty has increased. So, in fact 42 out of the 74 comparable regions are in the two extreme bands.⁹ There are 20 regions where poverty level has reduced more than two times of national average, belonging to the first band.

Similarly, in the urban sector, the record of reduction of poverty is slightly better in a sense that in 57 out of 74 comparable regions (above 77 percent the incidence of poverty has declined. There are 17 regions belonging to the category of sixth band, where HCR has actually increased during this period. In the rural sector, we observe more regional heterogeneity than in urban sector. These results are also plotted in a bar diagram in figure 3.

What is the regional disparity within a state? We look at a simple measure. We check whether or not, there is any state, which has regions that have performed the best and the worst over time. Only MPR and APR satisfy this criterion. Three (131, 132 and 134)¹⁰ out of seven regions in MPR have the best relative performance over all regions in the country.¹¹ It also has one region (136), where the HCR has gone up. APR has one (024) in the top group, and one, (021), where the poverty has actually increased.

IV Conclusion

In this paper, we have studied the regional disparities in poverty incidence and other poverty indices and in the levels of living, captured by average per capita consumption expenditure of households divided into three groups. One of our major findings is that poverty, as measured by the three indices in this paper, has declined for the entire country. This is true for both the rural and urban sectors of the country.

If we divide the country into the administrative boundaries of the states and the union territories, then the changes in the poverty levels turn out to be more revealing and meaningful. The inter-state disparity, measured using CV is found quite significant and it is further magnified if we look within the states, i.e. across the NSS regions. Indeed, we did find states with regions at the extreme ends of the spectrum—those with the best and worst performing among all regions within the country.

We also looked at the disparities in the level of living by comparing the average per capita consumption expenditures across states and regions. Using the coefficient of variation (CV) as a measure, we show that regional disparities in the standards of living of the poor have come down, while urban disparities are lower than rural disparities. At the state level, however, in 1987–88, urban disparities among the urban poor were higher; in 1993–94, they were lower. For

the non-poor, disparities fell over time, but the urban disparities were consistently higher than in the rural sector.

Our findings have important implications in identifying the poor regions within the state and call for the appropriate role of the state administrations to play in reducing the disparities across regions within the states.

References

- Barro, R. J. and X. Sala-i-Martin (1992): "Convergence", *Journal of Political Economy*, Vol. 100 (3).
- Dasgupta, D., P. Maiti, R. Mukherjee and S. Sarkar (1997): "Interregional Disparities and Growth in India", Public Policy Research Unit (PPRU), Indian Statistical Institute, New Delhi, December.
- Dubey, A. and S. Gangopadhyay (1998): "Counting the Poor: Where are the Poor in India?", *Sarvekshana: Analytical Report*, No. 1, February.
- Ghosh, B., S. Marjit and C. Neogi (1998): "Economic Growth and Regional Divergence in India, 1960 to 1995", *Economic and Political Weekly*, Vol. 33 (26), pp. 1623-30.
- Government of India (1979): *Report of the Task Force on Projections of Minimum Needs and Effective Consumption Demand*, Planning Commission, Perspective Planning Division, New Delhi.
- Government of India (1993): *Report of the Expert Group on Estimation of Proportion and Number of Poor*, Planning Commission, Perspective Planning Division, July, New Delhi.
- Government of India (1997): *Estimates of Poverty*, Press Information Bureau, March 11, New Delhi.
- Marjit, S. and S. Mitra (1996): "Convergence in Regional Growth Rates", *Economic and Political Weekly*, Vol. 31 (33), pp. 1723-30.
- Mathur, A. (1983): "Regional Development and Income Disparities in India: A Sectoral Analysis", *Economic Development and Cultural Change*, Vol. 31 (2), April, pp.475-505.
- Mazumdar, D. and H. H. Son (2001): *Vulnerable Groups and labour Markets in Thailand*, University of Toronto, October, Toronto. (mimeo.)
- Suryanarayana, M. H. (1996): "Economic Reforms, Nature and Poverty", *Economic and Political Weekly*, Vol. 31 (11), pp. 617-24.
- UNDP (1999): *Diversity and Disparities in Human Development: Key Challenges for India*, UNDP, New Delhi.

Table 1: State-wise Incidence of Poverty (HCR) (1987-88 and 1993-94)

(in percent)

State	1987-88			1993-94		
	Rural	Urban	Total	Rural	Urban	Total
APR	21.07	41.19	25.47	15.93	38.80	21.91
ARP	26.43	16.22	26.04	41.29	6.05	37.10
ASS	39.75	11.45	37.45	45.26	7.93	41.45
BIH	53.81	51.89	53.57	57.88	34.88	55.09
GOA	15.53	36.08	22.54	5.00	28.26	14.85
GUJ	28.48	38.52	31.24	22.23	28.28	24.20
HAR	13.15	18.57	14.29	27.99	16.47	25.02
HPR	10.98	7.20	10.73	30.37	9.26	28.59
J&K	25.85	14.98	23.91	18.24	5.13	13.34
KAR	34.77	49.19	38.95	30.08	39.73	32.84
KER	31.64	38.69	32.81	25.39	24.31	25.12
MPR	42.01	47.25	43.02	40.72	48.01	42.44
MAH	40.91	40.52	40.78	38.11	34.97	36.94
MAN	15.81	6.52	13.11	18.94	6.89	15.65
MEG	36.18	2.04	31.39	24.35	1.81	21.26
MIZ	3.93	0.62	2.81	6.22	0.00	4.26
NAG	NA	0.00	0.00	2.30	0.00	1.69
ORI	58.62	42.58	56.75	49.78	40.64	48.61
PUN	8.94	13.71	10.24	11.49	10.89	11.31
RAJ	33.30	37.89	34.25	26.36	31.05	27.44
SIK	41.00	7.72	34.94	31.70	0.96	29.25
TND	46.38	40.27	44.21	32.98	39.95	35.43
TRI	23.73	11.22	22.31	23.64	6.04	21.29
UPR	42.65	45.04	43.08	42.32	34.83	40.85
WEB	48.80	33.74	45.14	41.18	22.95	36.94
ANI	5.20	6.86	5.65	1.06	5.22	2.24
CHA	18.65	5.36	6.49	11.79	2.08	3.34
DNH	69.40	NA	69.40	51.67	38.83	50.74
DAD	NA	NA	NA	4.71	21.66	11.42
DEL	9.11	16.74	15.85	2.00	16.11	14.58
LAD	26.94	38.31	31.69	0.00	15.93	8.06
PON	44.07	56.06	50.78	19.99	36.47	30.26
All India	39.36	39.16	39.31	37.28	31.70	35.95

Source: Special tabulation by the authors using household level consumer expenditure data of 43rd round and 50th round collected by the NSSO.

Table 2: State-wise Poverty Index (PGI) (1987-88 and 1993-94)

State	1987-88			1993-94		
	Rural	Urban	Total	Rural	Urban	Total
APR	0.0438	0.1067	0.0576	0.0291	0.0926	0.0457
ARP	0.0539	0.0275	0.0529	0.0907	0.0136	0.0816
ASS	0.0750	0.0163	0.0703	0.0830	0.0092	0.0755
BIH	0.1293	0.1300	0.1294	0.1462	0.0789	0.1381
GOA	0.0248	0.0764	0.0424	0.0094	0.0492	0.0262
GUJ	0.0558	0.0823	0.0631	0.0415	0.0622	0.0482
HAR	0.0266	0.0367	0.0287	0.0557	0.0305	0.0492
HPR	0.0168	0.0073	0.0162	0.0557	0.0125	0.0520
J&K	0.0450	0.0243	0.0413	0.0322	0.0101	0.0239
KAR	0.0839	0.1409	0.1004	0.0627	0.1128	0.0770
KER	0.0683	0.0999	0.0736	0.0562	0.0553	0.0560
MPR	0.1058	0.1354	0.1115	0.0950	0.1339	0.1041
MAH	0.0956	0.1237	0.1049	0.0934	0.1015	0.0964
MAN	0.0200	0.0057	0.0158	0.0231	0.0059	0.0184
MEG	0.0924	0.0021	0.0797	0.0334	0.0019	0.0291
MIZ	0.0061	0.0033	0.0052	0.0086	0.0000	0.0059
NAG	NA	0.0000	0.0000	0.0021	0.0000	0.0015
ORI	0.1632	0.1112	0.1572	0.1195	0.1141	0.1189
PUN	0.0134	0.0229	0.0160	0.0188	0.0168	0.0183
RAJ	0.0864	0.0964	0.0885	0.0519	0.0701	0.0560
SIK	0.0722	0.0106	0.0609	0.0547	0.0004	0.0503
TND	0.1266	0.1155	0.1227	0.0731	0.1027	0.0835
TRI	0.0506	0.0248	0.0477	0.0532	0.0117	0.0476
UPR	0.1015	0.1227	0.1054	0.1037	0.0858	0.1002
WEB	0.1161	0.0744	0.1060	0.0829	0.0455	0.0742
ANI	0.0035	0.0083	0.0048	0.0007	0.0086	0.0030
CHA	0.0131	0.0085	0.0089	0.0130	0.0045	0.0056
DNH	0.1645	NA	0.1645	0.1074	0.1404	0.1098
DAD	NA	NA	NA	0.0089	0.0335	0.0187
DEL	0.0560	0.0302	0.0333	0.0016	0.0392	0.0351
LAD	0.0539	0.0529	0.0535	0.0000	0.0311	0.0157
PON	0.1210	0.1618	0.1439	0.0320	0.0904	0.0684
All India	0.0943	0.1040	0.0964	0.0845	0.0798	0.0834

Source: As in table 1.

Note: The figures are ratios.

Table 3: State-wise Poverty Index (FGT) (1987-88 and 1993-94)

State	1987-88			1993-94		
	Rural	Urban	Total	Rural	Urban	Total
✓APR	0.0144	0.0396	0.0199	0.0090	0.0320	0.0151
✓ARP	0.0195	0.0053	0.0189	0.0302	0.0046	0.0272
✓ASS	0.0207	0.0043	0.0193	0.0222	0.0023	0.0202
✓BIH	0.0450	0.0456	0.0451	0.0505	0.0266	0.0476
✓GOA	0.0054	0.0241	0.0118	0.0025	0.0143	0.0075
✓GUJ	0.0172	0.0257	0.0195	0.0124	0.0197	0.0148
✓HAR	0.0095	0.0119	0.0100	0.0174	0.0085	0.0151
✓HPR	0.0045	0.0012	0.0043	0.0162	0.0026	0.0151
✓J&K	0.0120	0.0063	0.0110	0.0088	0.0027	0.0065
✓KAR	0.0297	0.0565	0.0375	0.0203	0.0433	0.0268
✓KER	0.0223	0.0386	0.0250	0.0185	0.0189	0.0186
✓MPR	0.0380	0.0520	0.0407	0.0328	0.0503	0.0369
✓MAH	0.0321	0.0519	0.0386	0.0337	0.0416	0.0367
✓MAN	0.0041	0.0007	0.0031	0.0047	0.0013	0.0038
✓MEG	0.0335	0.0004	0.0289	0.0073	0.0003	0.0064
✓MIZ	0.0016	0.0030	0.0021	0.0018	0.0000	0.0013
✓NAG	NA	0.0000	0.0000	0.0002	0.0000	0.0002
✓ORI	0.0627	0.0416	0.0602	0.0407	0.0429	0.0410
✓PUN	0.0044	0.0062	0.0049	0.0049	0.0041	0.0047
✓RAJ	0.0340	0.0344	0.0341	0.0155	0.0226	0.0171
✓SIK	0.0193	0.0031	0.0164	0.0138	0.0000	0.0127
✓TND	0.0480	0.0466	0.0475	0.0250	0.0397	0.0302
✓TRI	0.0165	0.0073	0.0155	0.0171	0.0035	0.0153
✓UPR	0.0341	0.0452	0.0361	0.0353	0.0300	0.0343
✓WEB	0.0402	0.0239	0.0362	0.0245	0.0141	0.0221
✓ANI	0.0004	0.0018	0.0008	0.0001	0.0024	0.0007
✓CHA	0.0014	0.0029	0.0027	0.0020	0.0014	0.0015
✓DNH	0.0509	NA	0.0509	0.0305	0.0603	0.0327
✓DAD	NA	NA	NA	0.0023	0.0065	0.0039
✓DEL	0.0349	0.0087	0.0118	0.0001	0.0143	0.0127
✓LAD	0.0130	0.0117	0.0124	0.0000	0.0084	0.0043
✓PON	0.0456	0.0627	0.0552	0.0106	0.0326	0.0243
All India	0.0329	0.0391	0.0343	0.0281	0.0291	0.0283

Source: As in table 1.

Note: The figures are ratios.

Table 4: Region-wise Incidence of Poverty (HCR) (1987-88 and 1993-94)

(in percent)

State regions	1987-88			1993-94		
	Rural	Urban	Total	Rural	Urban	Total
21	17.24	38.50	21.78	17.13	43.46	24.10
22	21.53	37.73	25.10	14.00	30.59	18.28
23	19.04	52.92	27.55	20.72	42.95	26.81
24	40.81	56.54	43.91	12.97	44.62	20.75
31	26.43	16.22	26.04	41.29	6.05	37.10
41	35.25	6.42	32.93	37.06	3.50	33.49
42	43.28	14.47	40.86	50.53	11.05	46.55
43	26.68	9.49	25.88	41.43	3.54	38.30
51	52.70	34.65	49.00	62.25	26.53	55.34
52	54.74	64.98	55.30	58.46	49.35	57.87
53	53.08	63.24	54.82	53.62	35.43	51.07
61	15.53	36.08	22.54	5.00	28.26	14.85
71	34.20	39.16	34.48	26.02	33.91	26.75
72	25.87	33.06	28.59	23.49	29.17	25.91
73	22.85	30.12	25.56	26.20	20.16	23.76
74	46.95	51.97	47.85	26.19	25.28	26.03
75	18.95	51.17	27.49	11.99	32.60	19.52
81	17.52	19.69	18.10	31.91	17.43	27.65
82	7.96	15.16	8.87	22.25	14.09	20.64
91	10.98	7.20	10.73	30.37	9.26	28.59
101	23.28	16.64	21.71	9.87	4.69	7.80
102	35.45	17.56	34.51	43.90	7.39	33.62
103	20.70	13.78	19.18	NA	NA	NA
111	13.43	55.64	25.68	9.30	15.52	10.74
112	24.53	40.70	27.65	14.53	37.14	19.54
113	37.38	39.94	38.30	29.27	28.81	29.09
114	40.39	59.56	45.37	37.96	57.23	42.58
121	39.58	48.82	40.82	27.81	28.44	27.96
122	26.27	34.07	27.73	23.77	21.91	23.30
131	46.72	35.99	45.27	44.36	44.25	44.34
132	36.42	64.56	39.74	36.53	50.85	38.54
133	44.46	59.39	48.32	49.40	52.05	50.23
134	37.36	45.57	39.40	27.32	45.59	33.40
135	51.34	38.76	48.25	46.38	50.71	47.62
136	50.93	67.60	54.08	67.83	56.76	65.84
137	22.95	41.49	27.22	16.57	44.15	23.50

State regions	1987-88			1993-94		
	Rural	Urban	Total	Rural	Urban	Total
141	29.75	18.96	22.89	15.24	12.45	13.31
142	31.47	44.07	34.73	25.13	40.20	29.46
143	45.48	55.20	47.68	47.90	58.34	50.69
144	48.34	67.28	52.17	50.03	61.54	52.62
145	49.50	59.98	52.99	49.18	59.18	52.71
146	45.57	60.78	47.56	49.53	52.73	50.00
151	9.39	5.82	8.08	13.69	6.19	11.09
152	25.19	10.16	23.07	27.28	11.53	25.49
161	36.18	2.04	31.39	24.35	1.81	21.26
171	3.93	0.62	2.81	6.22	0.00	4.26
181	NA	0.00	0.00	2.30	0.00	1.69
191	48.37	42.11	47.67	45.31	47.23	45.55
192	82.98	52.93	80.29	68.84	41.94	66.07
193	61.01	39.90	58.16	45.79	32.45	43.88
201	7.72	12.46	9.07	7.03	8.29	7.43
202	10.73	15.88	12.03	17.31	15.60	16.88
211	27.95	37.98	29.98	25.51	23.38	25.02
212	28.81	41.40	31.89	17.99	33.57	22.10
213	61.10	33.41	58.95	46.30	26.59	44.11
214	31.32	25.05	30.05	33.03	42.75	35.17
221	41.00	7.72	34.94	31.70	0.96	29.25
231	60.73	39.78	51.16	44.23	38.57	41.87
232	39.50	38.53	39.28	20.81	43.00	26.05
233	51.44	52.07	51.65	37.16	48.38	40.95
234	30.39	29.55	30.11	22.35	32.10	25.71
241	23.73	11.22	22.31	23.64	6.04	21.29
251	13.38	20.36	14.98	24.83	17.85	23.40
252	32.60	46.60	36.02	29.29	32.41	30.10
253	44.48	43.16	44.21	50.19	29.31	45.75
254	50.79	45.22	50.24	48.79	40.21	47.79
255	65.02	64.22	64.88	67.36	66.79	67.23
261	33.88	18.37	31.83	58.42	32.63	55.51
262	60.45	47.22	59.24	47.49	35.14	45.96
263	43.75	32.21	39.02	31.41	18.24	26.29
264	47.59	42.08	47.09	40.73	41.78	40.82
271	5.20	6.86	5.65	1.06	5.22	2.24
281	18.65	5.36	6.49	11.79	2.08	3.34
291	69.40	NA	69.40	51.67	38.83	50.74

MAH

MAH

MBH

MIB

NAH

ORI

Raj

Raj

Sik

TND

TRI

WOR

Wb

ANI

CHA

DNI

State regions	1987-88			1993-94		
	Rural	Urban	Total	Rural	Urban	Total
301	NA	NA	NA	4.71	21.66	11.42
311	9.11	16.74	15.85	2.00	16.11	14.58
321	26.94	38.31	31.69	0.00	15.93	8.06
331	44.07	56.06	50.78	19.99	36.47	30.26
All India	39.36	39.16	39.31	37.28	31.70	35.95

Source: As in table 1

Table 5: Region-wise Poverty Index (PGI) (1987-88 and 1993-94)

State regions	1987-88			1993-94		
	Rural	Urban	Total	Rural	Urban	Total
21	0.0372	0.0959	0.0497	0.0324	0.1046	0.0515
22	0.0391	0.0965	0.0518	0.0233	0.0669	0.0345
23	0.0339	0.1416	0.0609	0.0432	0.1114	0.0618
24	0.1086	0.1676	0.1203	0.0217	0.1183	0.0454
31	0.0539	0.0275	0.0529	0.0907	0.0136	0.0816
41	0.0573	0.0091	0.0535	0.0686	0.0024	0.0616
42	0.0868	0.0206	0.0812	0.0937	0.0136	0.0856
43	0.0620	0.0130	0.0597	0.0564	0.0077	0.0524
51	0.1359	0.0783	0.1241	0.1614	0.0524	0.1403
52	0.1261	0.1975	0.1299	0.1477	0.1204	0.1459
53	0.1296	0.1500	0.1331	0.1322	0.0834	0.1254
61	0.0248	0.0764	0.0424	0.0094	0.0492	0.0262
71	0.0743	0.0893	0.0751	0.0588	0.0657	0.0594
72	0.0443	0.0629	0.0513	0.0387	0.0641	0.0495
73	0.0544	0.0535	0.0540	0.0514	0.0509	0.0512
74	0.0966	0.1227	0.1013	0.0448	0.0635	0.0480
75	0.0304	0.1284	0.0564	0.0202	0.0664	0.0371
81	0.0408	0.0378	0.0400	0.0627	0.0314	0.0535
82	0.0097	0.0335	0.0127	0.0454	0.0280	0.0420
91	0.0168	0.0073	0.0162	0.0557	0.0125	0.0520
101	0.0436	0.0297	0.0403	0.0129	0.0102	0.0118
102	0.0700	0.0315	0.0680	0.0914	0.0096	0.0684
103	0.0291	0.0206	0.0272	NA	NA	NA
111	0.0152	0.1484	0.0539	0.0142	0.0299	0.0178
112	0.0439	0.0677	0.0485	0.0267	0.0931	0.0414
113	0.0850	0.0985	0.0898	0.0575	0.0664	0.0609
114	0.1091	0.2005	0.1328	0.0830	0.1855	0.1075

State regions	1987-88			1993-94		
	Rural	Urban	Total	Rural	Urban	Total
121	0.0882	0.1435	0.0956	0.0683	0.0609	0.0666
122	0.0549	0.0800	0.0596	0.0481	0.0520	0.0491
131	0.1041	0.0977	0.1033	0.0857	0.1153	0.0909
132	0.0821	0.2082	0.0970	0.0770	0.1225	0.0834
133	0.1038	0.1760	0.1225	0.1191	0.1683	0.1345
134	0.1054	0.1244	0.1101	0.0533	0.1141	0.0735
135	0.1497	0.1179	0.1419	0.1187	0.1469	0.1268
136	0.1506	0.1999	0.1599	0.2263	0.1975	0.2211
137	0.0533	0.1028	0.0647	0.0355	0.1201	0.0567
141	0.0659	0.0392	0.0489	0.0255	0.0237	0.0242
142	0.0609	0.1210	0.0764	0.0502	0.0991	0.0642
143	0.1112	0.1980	0.1308	0.1105	0.1687	0.1261
144	0.1299	0.2432	0.1527	0.1603	0.2304	0.1761
145	0.1202	0.2034	0.1480	0.1153	0.2007	0.1454
146	0.0973	0.2012	0.1109	0.1072	0.1238	0.1096
151	0.0107	0.0046	0.0084	0.0162	0.0059	0.0126
152	0.0337	0.0115	0.0305	0.0340	0.0057	0.0308
161	0.0924	0.0021	0.0797	0.0334	0.0019	0.0291
171	0.0061	0.0033	0.0052	0.0086	0.0000	0.0059
181	NA	0.0000	0.0000	0.0021	0.0000	0.0015
191	0.1151	0.1017	0.1136	0.1032	0.1307	0.1066
192	0.2918	0.1458	0.2787	0.1886	0.1506	0.1847
193	0.1675	0.1112	0.1599	0.1053	0.0815	0.1019
201	0.0106	0.0224	0.0140	0.0104	0.0115	0.0108
202	0.0176	0.0238	0.0192	0.0298	0.0265	0.0290
211	0.0592	0.0993	0.0673	0.0430	0.0427	0.0430
212	0.0622	0.1046	0.0726	0.0347	0.0800	0.0467
213	0.2452	0.0881	0.2330	0.0977	0.0589	0.0934
214	0.0619	0.0589	0.0613	0.0770	0.1071	0.0836
221	0.0722	0.0106	0.0609	0.0547	0.0004	0.0503
231	0.1756	0.1147	0.1478	0.1049	0.1055	0.1051
232	0.0922	0.0982	0.0935	0.0402	0.1069	0.0559
233	0.1541	0.1619	0.1567	0.0871	0.1321	0.1023
234	0.0704	0.0762	0.0723	0.0398	0.0641	0.0482
241	0.0506	0.0248	0.0477	0.0532	0.0117	0.0476
251	0.0202	0.0422	0.0253	0.0436	0.0397	0.0428
252	0.0738	0.1279	0.0870	0.0608	0.0753	0.0646
253	0.1037	0.1137	0.1057	0.1379	0.0785	0.1252

State regions	1987-88			1993-94		
	Rural	Urban	Total	Rural	Urban	Total
254	0.1231	0.1175	0.1226	0.1198	0.0956	0.1170
255	0.1809	0.2211	0.1879	0.2017	0.1992	0.2011
261	0.0442	0.0268	0.0419	0.1156	0.0747	0.1110
262	0.1573	0.1305	0.1548	0.1015	0.0712	0.0977
263	0.1094	0.0688	0.0928	0.0674	0.0343	0.0545
264	0.1023	0.0911	0.1013	0.0693	0.0932	0.0713
271	0.0035	0.0083	0.0048	0.0007	0.0086	0.0030
281	0.0131	0.0085	0.0089	0.0130	0.0045	0.0056
291	0.1645	NA	0.1645	0.1074	0.1404	0.1098
301	NA	NA	NA	0.0089	0.0335	0.0187
311	0.0560	0.0302	0.0333	0.0016	0.0392	0.0351
321	0.0539	0.0529	0.0535	0.0000	0.0311	0.0157
331	0.1210	0.1618	0.1439	0.0320	0.0904	0.0684
All India	0.0943	0.1040	0.0964	0.0845	0.0798	0.0834

Source: As in table 1.

Note: The figures are ratios.

Table 6: Region-wise State-wise Poverty Index (FGT) (1987-88 and 1993-94)

State regions	1987-88			1993-94		
	Rural	Urban	Total	Rural	Urban	Total
21	0.0132	0.0347	0.0177	0.0103	0.0366	0.0172
22	0.0109	0.0353	0.0163	0.0070	0.0211	0.0107
23	0.0111	0.0541	0.0219	0.0147	0.0435	0.0226
24	0.0387	0.0678	0.0444	0.0053	0.0421	0.0144
31	0.0195	0.0053	0.0189	0.0302	0.0046	0.0272
41	0.0143	0.0022	0.0133	0.0187	0.0003	0.0167
42	0.0248	0.0056	0.0232	0.0251	0.0036	0.0230
43	0.0167	0.0029	0.0161	0.0106	0.0020	0.0099
51	0.0507	0.0261	0.0456	0.0559	0.0156	0.0481
52	0.0422	0.0782	0.0442	0.0514	0.0438	0.0510
53	0.0453	0.0496	0.0461	0.0450	0.0285	0.0427
61	0.0054	0.0241	0.0118	0.0025	0.0143	0.0075
71	0.0250	0.0299	0.0253	0.0199	0.0180	0.0197
72	0.0114	0.0180	0.0139	0.0100	0.0203	0.0144
73	0.0181	0.0135	0.0164	0.0151	0.0182	0.0163
74	0.0276	0.0396	0.0297	0.0121	0.0203	0.0135
75	0.0108	0.0455	0.0200	0.0069	0.0199	0.0117

State regions	1987-88			1993-94		
	Rural	Urban	Total	Rural	Urban	Total
81	0.0155	0.0125	0.0147	0.0201	0.0091	0.0169
82	0.0024	0.0101	0.0034	0.0134	0.0071	0.0121
91	0.0045	0.0012	0.0043	0.0162	0.0026	0.0151
101	0.0125	0.0088	0.0116	0.0027	0.0028	0.0027
102	0.0203	0.0074	0.0196	0.0276	0.0023	0.0205
103	0.0063	0.0048	0.0060	NA	NA	NA
111	0.0031	0.0479	0.0161	0.0038	0.0094	0.0051
112	0.0113	0.0190	0.0128	0.0094	0.0316	0.0143
113	0.0290	0.0351	0.0312	0.0180	0.0210	0.0192
114	0.0410	0.0898	0.0537	0.0271	0.0776	0.0392
121	0.0285	0.0588	0.0325	0.0241	0.0199	0.0231
122	0.0181	0.0294	0.0202	0.0148	0.0183	0.0157
131	0.0338	0.0363	0.0342	0.0247	0.0409	0.0276
132	0.0275	0.0846	0.0342	0.0235	0.0395	0.0258
133	0.0339	0.0680	0.0427	0.0398	0.0705	0.0494
134	0.0413	0.0461	0.0425	0.0161	0.0388	0.0237
135	0.0599	0.0485	0.0571	0.0425	0.0560	0.0464
136	0.0588	0.0763	0.0621	0.1010	0.0894	0.0990
137	0.0177	0.0367	0.0221	0.0114	0.0436	0.0195
141	0.0215	0.0117	0.0153	0.0066	0.0068	0.0068
142	0.0174	0.0456	0.0247	0.0162	0.0363	0.0220
143	0.0385	0.0873	0.0495	0.0366	0.0675	0.0449
144	0.0475	0.1138	0.0609	0.0696	0.1114	0.0790
145	0.0408	0.0927	0.0581	0.0371	0.0873	0.0548
146	0.0313	0.0866	0.0385	0.0342	0.0433	0.0355
151	0.0021	0.0005	0.0015	0.0032	0.0015	0.0026
152	0.0070	0.0016	0.0063	0.0071	0.0004	0.0064
161	0.0335	0.0004	0.0289	0.0073	0.0003	0.0064
171	0.0016	0.0030	0.0021	0.0018	0.0000	0.0013
181	NA	0.0000	0.0000	0.0002	0.0000	0.0002
191	0.0394	0.0354	0.0390	0.0330	0.0460	0.0346
192	0.1285	0.0597	0.1224	0.0706	0.0634	0.0699
193	0.0629	0.0429	0.0602	0.0354	0.0319	0.0349
201	0.0033	0.0065	0.0042	0.0026	0.0029	0.0026
202	0.0060	0.0056	0.0059	0.0079	0.0063	0.0075
211	0.0182	0.0363	0.0219	0.0120	0.0116	0.0120
212	0.0198	0.0371	0.0241	0.0105	0.0263	0.0146
213	0.1278	0.0297	0.1202	0.0289	0.0197	0.0279

State regions	1987-88			1993-94		
	Rural	Urban	Total	Rural	Urban	Total
214	0.0185	0.0208	0.0190	0.0249	0.0376	0.0277
221	0.0193	0.0031	0.0164	0.0138	0.0000	0.0127
231	0.0691	0.0456	0.0584	0.0372	0.0449	0.0404
232	0.0313	0.0372	0.0326	0.0133	0.0375	0.0190
233	0.0622	0.0697	0.0647	0.0304	0.0504	0.0372
234	0.0228	0.0286	0.0248	0.0114	0.0195	0.0142
241	0.0165	0.0073	0.0155	0.0171	0.0035	0.0153
251	0.0047	0.0119	0.0064	0.0108	0.0115	0.0110
252	0.0243	0.0465	0.0297	0.0185	0.0256	0.0203
253	0.0340	0.0411	0.0354	0.0501	0.0290	0.0456
254	0.0412	0.0418	0.0412	0.0403	0.0315	0.0393
255	0.0698	0.1020	0.0754	0.0809	0.0801	0.0807
261	0.0096	0.0062	0.0092	0.0319	0.0246	0.0310
262	0.0566	0.0480	0.0558	0.0314	0.0224	0.0303
263	0.0389	0.0213	0.0317	0.0210	0.0107	0.0170
264	0.0333	0.0313	0.0331	0.0181	0.0276	0.0189
271	0.0004	0.0018	0.0008	0.0001	0.0024	0.0007
281	0.0014	0.0029	0.0027	0.0020	0.0014	0.0015
291	0.0509	NA	0.0509	0.0305	0.0603	0.0327
301	NA	NA	NA	0.0023	0.0065	0.0039
311	0.0349	0.0087	0.0118	0.0001	0.0143	0.0127
321	0.0130	0.0117	0.0124	0.0000	0.0084	0.0043
331	0.0456	0.0627	0.0552	0.0106	0.0326	0.0243
All India	0.0329	0.0391	0.0343	0.0281	0.0291	0.0283

Source: As in table 1.

Note: The figures are ratios.

Table 7: State-wise Average Per Capita Monthly Total Expenditure (1987-88)

State	APCTEP			APCTENP			APCTE		
	Rural	Urban	Total	Rural	Urban	Total	Rural	Urban	Total
APR	72.82	112.54	86.85	181.84	308.72	203.72	158.87	227.92	173.96
ARP	101.47	105.16	101.55	261.78	295.14	263.23	219.41	264.34	221.14
ASS	103.38	108.59	103.51	194.65	274.52	203.87	158.37	255.52	166.29
BIH	91.44	112.61	94.03	185.98	267.66	196.67	135.10	187.21	141.68
GOA	97.14	149.12	125.51	203.06	386.01	254.53	186.61	300.53	225.45
GUJ	92.46	136.18	107.28	194.17	295.80	219.15	165.20	234.32	184.20
HAR	90.08	114.89	96.87	241.33	306.81	254.42	221.44	271.17	231.91
HPR	95.63	129.47	97.15	222.76	342.30	231.10	208.80	326.98	216.73
J&K	102.67	124.31	105.09	228.58	290.08	240.86	196.03	265.25	208.40
KAR	79.26	122.16	94.95	175.63	321.61	210.80	142.12	223.50	165.68
KER	102.40	121.13	106.07	241.88	350.38	258.35	197.75	261.69	208.38
MPR	80.05	127.24	90.05	180.71	328.80	207.17	138.42	233.56	156.78
MAH	88.59	131.42	102.62	205.99	369.66	260.22	157.96	273.13	195.95
MAN	111.31	115.57	111.93	197.56	208.53	201.00	183.92	202.47	189.32
MEG	94.91	113.35	95.08	211.79	341.95	237.90	169.50	337.28	193.08
MIZ	107.58	60.42	104.06	247.08	349.01	282.29	241.59	347.22	277.27
NAG	NA	NA	NA	NA	390.93	390.93	NA	390.93	390.93
ORI	87.61	122.21	90.63	188.34	296.00	204.96	129.30	222.01	140.08
PUN	95.93	120.78	105.00	253.30	300.25	265.60	239.23	275.64	249.15
RAJ	87.02	123.30	95.28	217.92	319.41	237.65	174.33	245.11	188.89
SIK	105.01	109.25	105.18	194.43	295.61	220.58	157.76	281.22	180.26
TND	85.95	118.28	96.42	217.25	330.36	260.31	156.36	244.95	187.86
TRI	100.25	98.58	100.16	213.31	280.03	221.96	186.49	259.67	194.79
UPR	87.30	112.15	92.00	194.74	297.34	212.67	148.91	213.94	160.69
WEB	98.47	116.87	101.81	201.02	314.73	234.39	150.98	247.97	174.54
ANI	110.28	145.75	121.79	273.22	430.06	314.55	264.74	410.55	303.67
CHA	134.83	122.03	125.16	310.76	439.01	429.52	277.95	422.02	409.77
DNH	88.21	NA	88.21	215.23		215.23	127.07	NA	127.07
DAD	NA	NA	NA	NA	NA	NA	NA	NA	NA
DEL	43.48	144.95	138.12	337.74	485.95	467.21	310.94	428.86	415.06
LAD	104.46	140.76	122.78	264.49	276.85	269.15	221.38	224.72	222.77
PON	85.75	117.95	105.65	250.24	298.22	274.21	177.75	197.15	188.61
All India	88.70	121.00	95.94	200.74	326.53	229.10	156.64	246.04	176.75

Source: As in table 1.

Note: The figures are at current prices.

Table 8: State-wise Average Per Capita Monthly Total Expenditure (1993-94)

State	APCTEP			APCTENP			APCTE		
	Rural	Urban	Total	Rural	Urban	Total	Rural	Urban	Total
APR	75.16	115.63	93.89	179.22	291.60	202.23	162.64	223.31	178.50
ARP	99.44	98.11	99.41	226.27	306.59	240.51	173.90	293.99	188.16
ASS	104.06	111.98	104.21	172.90	287.19	191.23	141.74	273.30	155.16
BIH	89.95	116.26	91.98	170.75	279.13	189.82	123.98	222.33	135.92
GOA	93.93	156.23	144.14	298.85	355.24	318.97	288.60	299.00	293.01
GUJ	93.55	135.11	109.34	194.59	315.71	231.85	172.13	264.64	202.21
HAR	90.45	116.74	94.91	222.03	291.66	242.03	185.20	262.85	205.22
HPR	92.20	124.72	93.09	203.12	454.96	230.14	169.43	424.38	190.96
J&K	102.39	119.17	104.80	213.52	326.77	259.88	193.25	316.12	239.19
KAR	82.68	122.58	96.47	179.78	316.75	214.90	150.57	239.61	176.01
KER	101.72	126.14	107.50	245.66	339.25	268.80	209.12	287.44	228.27
MPR	82.05	128.62	94.47	179.31	323.20	209.95	139.70	229.77	160.94
MAH	87.27	134.28	103.84	207.06	396.79	279.92	161.41	304.99	214.88
MAN	111.89	115.83	112.37	177.14	196.05	182.84	164.78	190.52	171.81
MEG	109.96	113.58	110.00	223.65	319.64	240.10	195.97	315.91	212.45
MIZ	109.90	NA	109.90	220.82	327.57	256.05	213.92	327.57	249.84
NAG	115.77	NA	115.77	243.85	303.13	259.94	240.90	303.13	257.51
ORI	92.26	118.94	95.10	182.46	294.69	198.99	137.56	223.27	148.49
PUN	94.38	122.60	102.23	224.66	312.95	250.32	209.70	292.23	233.56
RAJ	94.41	128.02	103.13	204.62	304.97	226.50	175.57	250.03	192.65
SIK	105.46	120.62	105.50	190.60	310.87	204.03	163.61	309.04	175.21
TND	92.01	123.19	104.39	217.82	325.87	253.21	176.33	244.90	200.48
TRI	98.78	102.00	98.90	215.99	304.17	230.01	188.29	291.96	202.09
UPR	86.49	116.16	91.45	191.88	296.91	214.58	147.28	233.95	164.29
WEB	103.19	120.26	105.65	205.19	337.02	242.64	163.18	287.27	192.03
ANI	110.23	138.38	128.79	300.30	527.22	362.45	298.28	506.91	357.22
CHA	128.95	113.72	120.71	282.86	597.71	560.29	264.71	587.64	545.58
DNH	91.59	120.81	93.22	189.65	340.73	203.35	138.98	255.33	147.48
DAD	93.75	159.85	143.38	277.58	305.02	287.19	268.92	273.58	270.77
DEL	104.02	133.86	133.42	296.10	515.86	488.50	292.26	454.31	436.73
LAD	NA	131.41	131.41	282.89	326.92	303.25	282.89	295.77	289.40
PON	99.33	124.70	118.37	242.52	297.87	273.91	213.89	234.71	226.85
All India	91.18	123.92	98.05	198.68	331.68	232.48	158.60	265.83	184.15

Source: As in table 1.

Note: The figures are at constant (1987-88) prices.

Table 9: Region-wise Average Per Capita Monthly Total Expenditure (1987-88)

State/regions	APCTEP			APCTENP			APCTE		
	Rural	Urban	Total	Rural	Urban	Total	Rural	Urban	Total
21	72.11	114.05	87.95	182.10	303.49	202.51	165.14	230.56	177.55
22	75.24	113.02	87.76	182.07	332.31	209.60	153.07	249.57	179.02
23	75.58	111.26	92.79	185.67	253.84	196.80	164.72	178.38	168.15
24	67.47	106.85	77.46	173.12	268.84	187.73	130.01	177.25	139.31
31	101.47	105.16	101.55	261.78	295.14	263.23	219.41	264.34	221.14
41	106.71	108.66	106.74	200.84	300.55	212.00	167.66	288.23	177.34
42	101.90	108.55	102.10	189.86	256.36	197.96	151.79	234.97	158.79
43	97.83	109.22	98.02	200.35	319.50	207.11	172.99	299.55	178.88
51	89.31	116.30	93.22	188.93	290.41	215.55	136.43	230.09	155.60
52	92.65	104.58	93.41	189.14	234.67	191.08	136.32	150.14	137.07
53	90.96	114.61	95.64	178.06	241.44	186.90	131.83	161.24	136.87
61	97.14	149.12	125.51	203.06	386.01	254.53	186.61	300.53	225.45
71	90.02	133.69	92.87	211.11	257.99	213.61	169.70	209.32	171.98
72	95.32	140.25	114.95	192.44	299.62	230.39	167.31	246.93	197.39
73	87.63	142.43	111.75	201.61	329.91	246.60	175.57	273.45	212.13
74	91.33	132.31	99.36	184.64	243.76	194.47	140.83	185.83	148.96
75	96.53	129.71	112.90	184.71	267.23	199.44	168.00	196.86	175.65
81	86.60	115.71	95.15	237.90	315.78	258.52	211.40	276.38	228.94
82	99.19	111.61	101.87	244.97	280.91	249.19	233.37	255.25	236.13
91	95.63	129.47	97.15	222.76	342.30	231.10	208.80	326.98	216.73
101	101.04	121.92	104.82	247.23	306.50	262.14	213.19	275.78	227.99
102	99.77	121.78	100.36	221.60	311.92	227.62	178.41	278.53	183.71
103	106.84	126.24	109.90	223.82	279.09	236.77	199.61	258.03	212.43
111	92.61	125.51	113.30	181.62	294.66	201.21	169.67	200.55	178.63
112	85.78	142.72	101.96	174.50	284.25	191.88	152.74	226.65	167.01
113	80.72	128.96	98.76	177.29	346.48	236.33	141.19	259.59	183.64
114	76.24	113.56	88.96	173.01	298.69	197.16	133.93	188.42	148.07
121	101.50	115.28	103.70	219.22	309.93	229.73	172.62	214.91	178.29
122	103.32	124.96	108.29	254.45	364.70	273.24	214.75	283.02	227.51
131	83.15	129.94	88.18	163.16	337.34	190.71	125.78	262.70	144.30
132	82.87	120.85	90.16	183.44	302.49	191.71	146.81	185.22	151.35
133	82.01	125.50	95.82	160.61	318.54	192.66	125.67	203.90	145.87
134	76.81	129.65	92.01	201.60	325.65	229.32	154.99	236.33	175.22
135	75.80	124.08	85.34	178.42	348.59	227.94	125.73	261.57	159.14
136	75.35	125.61	87.21	180.16	289.30	194.70	126.78	178.65	136.57
137	82.14	134.18	100.41	197.64	324.35	221.10	171.14	245.45	188.25
141	90.02	150.07	121.64	194.18	394.49	328.02	163.19	348.14	280.77

State/regions	APCTEP			APCTENP			APCTE		
	Rural	Urban	Total	Rural	Urban	Total	Rural	Urban	Total
311	43.48	144.95	138.12	337.74	485.95	467.21	310.94	428.86	415.06
321	104.46	140.76	122.78	264.49	276.85	269.15	221.38	224.72	222.77
331	85.75	117.95	105.65	250.24	298.22	274.21	177.75	197.15	188.61
All India	88.70	121.00	95.94	200.74	326.53	229.10	156.64	246.04	176.75

Source: As in table 1.

Note: The figures are at current prices.

Table 10: Region-wise Average Per Monthly total Expenditure (1993-94)

State/regions	APCTEP			APCTENP			APCTE		
	Rural	Urban	Total	Rural	Urban	Total	Rural	Urban	Total
21	74.54	115.31	93.99	173.36	279.96	194.36	156.42	208.41	170.18
22	76.64	118.68	94.79	181.65	309.96	209.76	166.95	251.45	188.75
23	72.79	112.48	90.19	189.89	283.52	209.86	165.63	210.06	177.79
24	76.56	111.63	95.09	187.16	264.75	200.48	172.81	196.42	178.61
31	99.44	98.11	99.41	226.27	306.59	240.51	173.90	293.99	188.16
41	103.84	117.86	103.99	174.71	306.20	195.03	148.44	299.61	164.54
42	103.80	111.01	103.98	171.76	274.99	189.05	137.42	256.86	149.44
43	110.09	99.17	110.01	169.72	268.03	182.44	145.02	262.05	154.70
51	89.15	120.59	92.06	175.73	308.18	217.84	121.83	258.42	148.23
52	89.95	113.59	91.24	167.99	246.24	174.00	122.37	180.77	126.11
53	90.68	114.86	93.03	171.26	257.31	187.17	128.05	206.84	139.09
61	93.93	156.23	144.14	298.85	355.24	318.97	288.60	299.00	293.01
71	89.03	139.65	94.95	185.05	287.26	193.57	160.07	237.21	167.18
72	96.04	135.13	114.79	198.10	325.75	250.10	174.13	270.15	215.04
73	92.44	129.43	105.16	198.45	340.71	258.76	170.68	298.11	222.27
74	95.33	129.66	101.12	192.50	395.42	228.11	167.05	328.25	195.05
75	95.65	137.91	121.44	197.51	260.36	216.74	185.30	220.44	198.14
81	90.72	117.39	95.66	206.20	284.47	232.46	169.35	255.35	194.64
82	89.87	114.76	93.23	242.32	308.73	256.53	208.40	281.39	222.83
91	92.20	124.72	93.09	203.12	454.96	230.14	169.43	424.38	190.96
101	108.14	116.13	110.06	218.13	334.27	266.04	207.28	324.04	253.87
102	98.44	129.15	100.34	190.84	286.73	228.53	150.28	275.08	185.44
103	NA	NA	NA	NA	NA	NA	NA	NA	NA
111	88.53	138.15	105.16	216.97	357.20	247.77	205.03	323.21	232.45
112	85.26	128.26	103.35	180.93	300.36	201.57	167.03	236.43	182.38
113	83.93	131.73	102.06	174.88	325.21	232.68	148.26	269.47	194.68
114	81.62	115.71	92.59	172.70	291.25	193.84	138.13	190.79	150.73

State/regions	APCTEP			APCTENP			APCTE		
	Rural	Urban	Total	Rural	Urban	Total	Rural	Urban	Total
121	98.55	128.30	105.50	228.10	323.81	249.94	192.07	268.21	209.56
122	104.18	124.51	109.04	256.72	347.49	280.22	220.46	298.63	240.33
131	86.34	131.90	94.36	157.31	309.01	184.12	125.83	230.63	144.32
132	84.45	135.38	93.86	171.50	332.91	189.58	139.70	232.47	152.69
133	81.21	120.69	94.04	155.66	343.69	212.49	118.88	227.62	152.99
134	86.13	133.73	107.76	186.00	332.58	225.87	158.71	241.92	186.42
135	79.62	126.70	93.96	212.52	311.95	239.28	150.88	218.00	170.08
136	71.30	116.29	78.25	168.91	318.09	202.76	102.70	203.56	120.78
137	84.08	129.84	105.67	206.34	322.33	227.60	186.07	237.35	198.95
141	96.26	153.17	133.12	235.39	422.67	366.35	214.19	389.12	335.32
142	92.51	142.54	112.12	204.83	373.75	245.94	176.61	280.80	206.52
143	88.93	134.47	102.95	182.19	314.62	212.12	137.52	209.51	156.78
144	78.57	118.34	89.05	231.93	388.42	260.55	155.21	222.20	170.30
145	88.52	125.02	102.96	183.46	349.07	233.84	136.76	216.47	164.86
146	90.58	144.77	98.86	180.76	312.22	198.77	136.09	223.92	148.82
151	112.33	114.57	112.76	174.32	196.21	182.34	165.83	191.16	174.63
152	111.55	120.30	112.00	182.44	194.91	184.13	163.10	186.31	165.74
161	109.96	113.58	110.00	223.65	319.64	240.10	195.97	315.91	212.45
171	109.90	NA	109.90	220.82	327.57	256.05	213.92	327.57	249.84
181	115.77	NA	115.77	243.85	303.13	259.94	240.90	303.13	257.51
191	93.76	119.63	97.11	181.61	290.03	194.72	141.81	209.54	150.26
192	88.16	106.02	89.32	165.17	317.48	191.98	112.16	228.80	124.15
193	93.49	123.86	96.72	188.92	291.82	206.69	145.22	237.31	158.43
201	96.14	124.86	106.30	226.63	321.01	256.25	217.45	304.74	245.10
202	93.44	120.40	99.66	221.78	297.02	240.85	199.57	269.46	217.01
211	97.70	135.16	105.81	190.99	292.92	215.12	167.19	256.03	187.77
212	94.84	125.96	107.31	206.55	313.03	230.50	186.46	250.24	203.28
213	92.73	128.74	95.14	217.11	325.13	232.87	159.52	272.91	172.12
214	90.12	123.95	99.17	223.53	300.90	238.56	179.46	225.26	189.54
221	105.46	120.62	105.50	190.60	310.87	204.03	163.61	309.04	175.21
231	90.20	120.47	101.84	237.35	332.62	279.37	172.26	250.79	205.03
232	95.41	124.60	106.78	223.86	336.75	244.39	197.13	245.52	208.55
233	90.52	120.56	102.50	192.98	294.12	222.84	154.91	210.15	173.57
234	97.18	132.68	112.46	216.21	336.30	254.04	189.60	270.95	217.64
241	98.78	102.00	98.90	215.99	304.17	230.01	188.29	291.96	202.09
251	94.43	119.87	98.42	187.95	305.15	213.80	164.73	272.08	186.81
252	90.78	118.33	98.51	203.67	307.21	229.76	170.60	245.99	190.25
253	83.09	112.89	87.16	187.83	291.61	216.60	135.27	239.23	157.38

State/regions	APCTEP			APCTENP			APCTE		
	Rural	Urban	Total	Rural	Urban	Total	Rural	Urban	Total
254	86.44	117.50	89.52	179.95	275.75	192.85	134.32	212.11	143.47
255	80.27	108.18	86.44	197.04	283.66	216.60	118.38	166.46	129.09
261	103.65	115.61	104.44	160.01	245.62	174.63	127.08	203.20	135.67
262	101.60	119.57	103.30	211.80	297.51	224.53	159.47	234.98	168.81
263	101.48	121.80	106.95	209.88	351.77	271.02	175.83	309.83	227.89
264	107.21	116.50	108.00	202.17	269.72	207.69	163.49	205.70	167.00
271	110.23	138.38	128.79	300.30	527.22	362.45	298.28	506.91	357.22
281	128.95	113.72	120.71	282.86	597.71	560.29	264.71	587.64	545.58
291	91.59	120.81	93.22	189.65	340.73	203.35	138.98	255.33	147.48
301	93.75	159.85	143.38	277.58	305.02	287.19	268.92	273.58	270.77
311	104.02	133.86	133.42	296.10	515.86	488.50	292.26	454.31	436.73
321	NA	131.41	131.41	282.89	326.92	303.25	282.89	295.77	289.40
331	99.33	124.70	118.37	242.52	297.87	273.91	213.89	234.71	226.85
All India	91.18	123.92	98.05	198.68	331.68	232.48	158.60	265.83	184.15

Source: As in table 1.

Note: The figures are at constant (1987-88) prices.

Table 11: Rank Correlation of Poverty Measures (1987-88 and 1993-94)

Sector	State			State region		
	HCR	PGI	FGT	HCR	PGI	FGT
Rural	0.76	0.71	0.64	0.80	0.75	0.72
Urban	0.92	0.93	0.95	0.85	0.86	0.88
Total	0.84	0.85	0.84	0.84	0.82	0.83

Source: As in table 1.

Table 12: Rank Correlation of Average PCTEs (1987-88 and 1993-94)

Sector	State			State region		
	APCTEP	APCTENP	APCTE	APCTEP	APCTENP	APCTE
Rural	0.73	0.83	0.84	0.80	0.69	0.77
Urban	0.87	0.82	0.93	0.77	0.66	1.00
Total	0.84	0.93	0.85	0.80	0.84	1.00

Source: As in table 1.

Table 13: Coefficient of Variation Across States

Sector	1987-88			1993-94		
	HCR	PGI	FGT	HCR	PGI	FGT
Rural	43.70	51.98	56.25	46.62	54.57	59.05
Urban	52.89	60.83	65.27	56.85	63.64	67.38
Total	43.39	52.01	56.57	43.08	50.19	54.62

Source: As in table 1.

Note: The figures are in percent.

Table 14: Coefficient of Variation Across NSS Regions

Sector	1987-88			1993-94		
	HCR	PGI	FGT	HCR	PGI	FGT
Rural	42.45	58.61	74.12	46.29	59.50	71.22
Urban	47.60	61.49	72.12	54.63	70.25	83.37
Total	44.01	61.46	75.75	49.54	63.06	75.56

Source: As in table 1.

Note: The figures are in percent.

Table 15: Coefficient of Variation Across States

Sector	1987-88			1993-94		
	APCTEP	APCTENP	APCTE	APCTEP	APCTENP	APCTE
Rural	18.25	21.96	33.99	13.63	21.25	34.68
Urban	9.90	17.28	27.60	9.20	25.73	36.26
Total	14.69	28.87	41.96	15.56	38.34	52.72

Source: As in table 1.

Note: The figures are in percent.

Table 16: Coefficient of Variation Across NSS Regions

Sector	1987-88			1993-94		
	APCTEP	APCTENP	APCTE	APCTEP	APCTENP	APCTE
Rural	14.28	16.32	25.90	11.63	16.07	25.49
Urban	12.37	15.36	22.82	8.94	19.32	26.64
Total	9.11	20.93	30.31	12.63	26.40	36.38

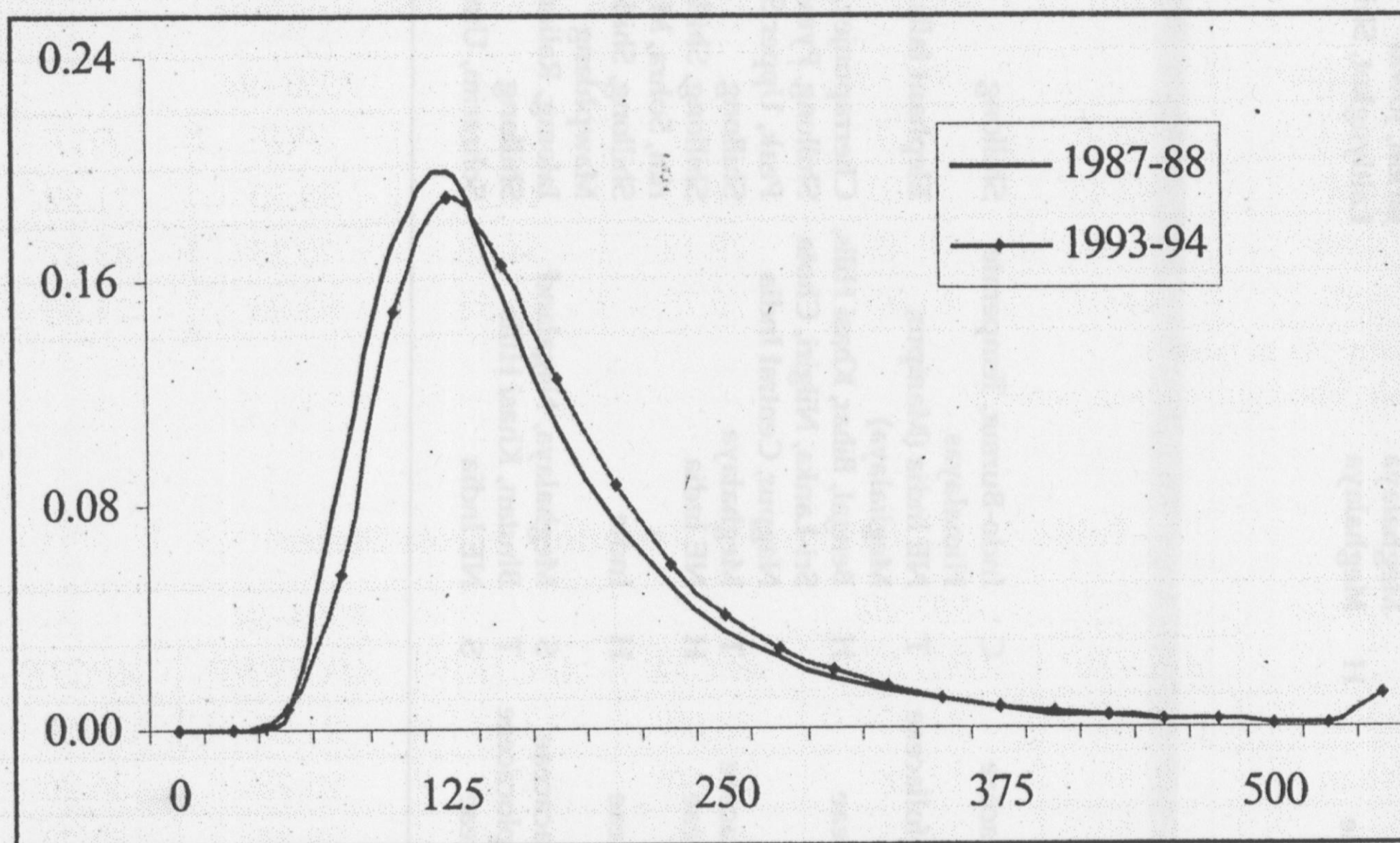
Source: As in table 1.

Note: The figures are in percent.

Table 17: Distribution of Regions from Average (all India) HCR

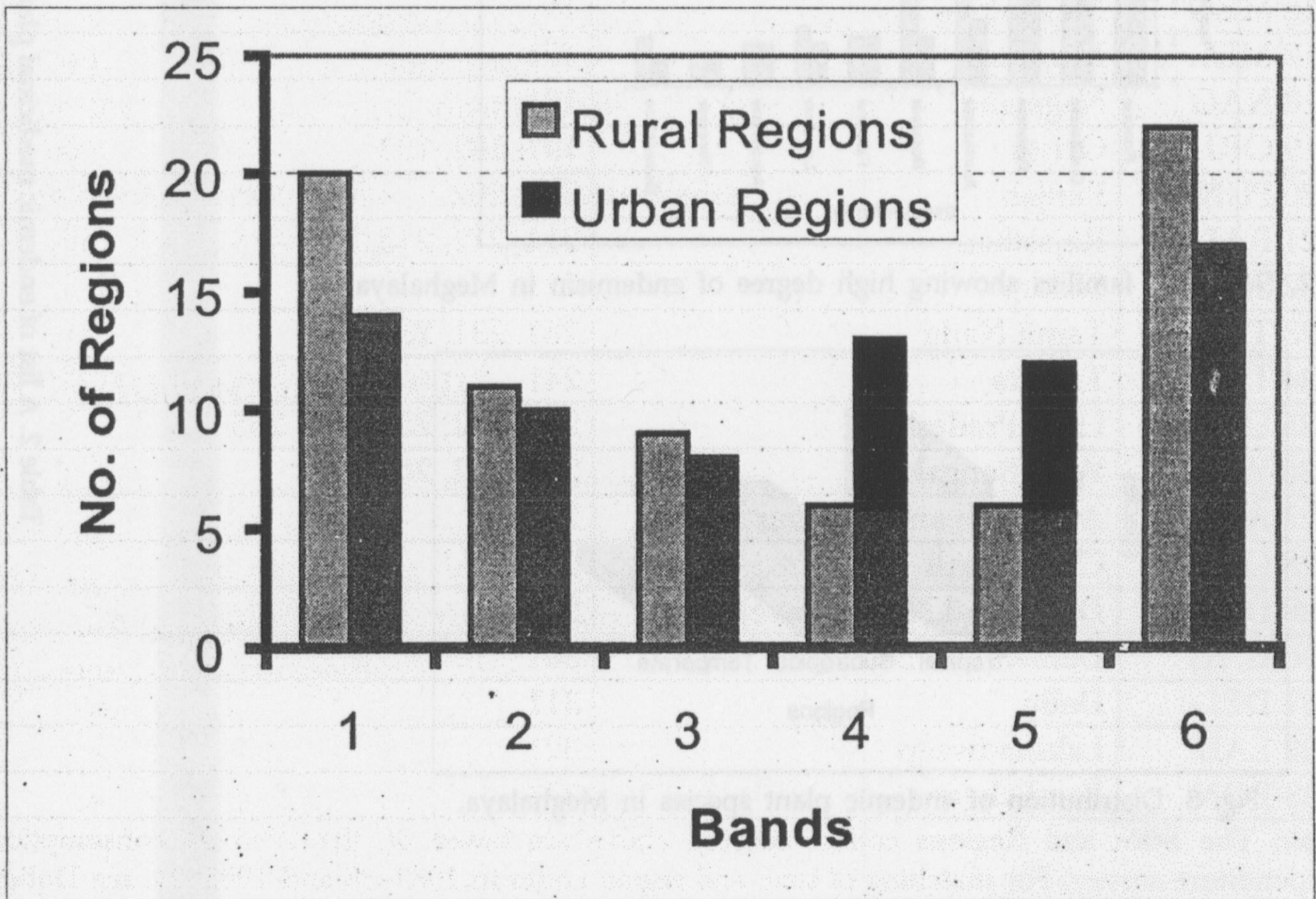
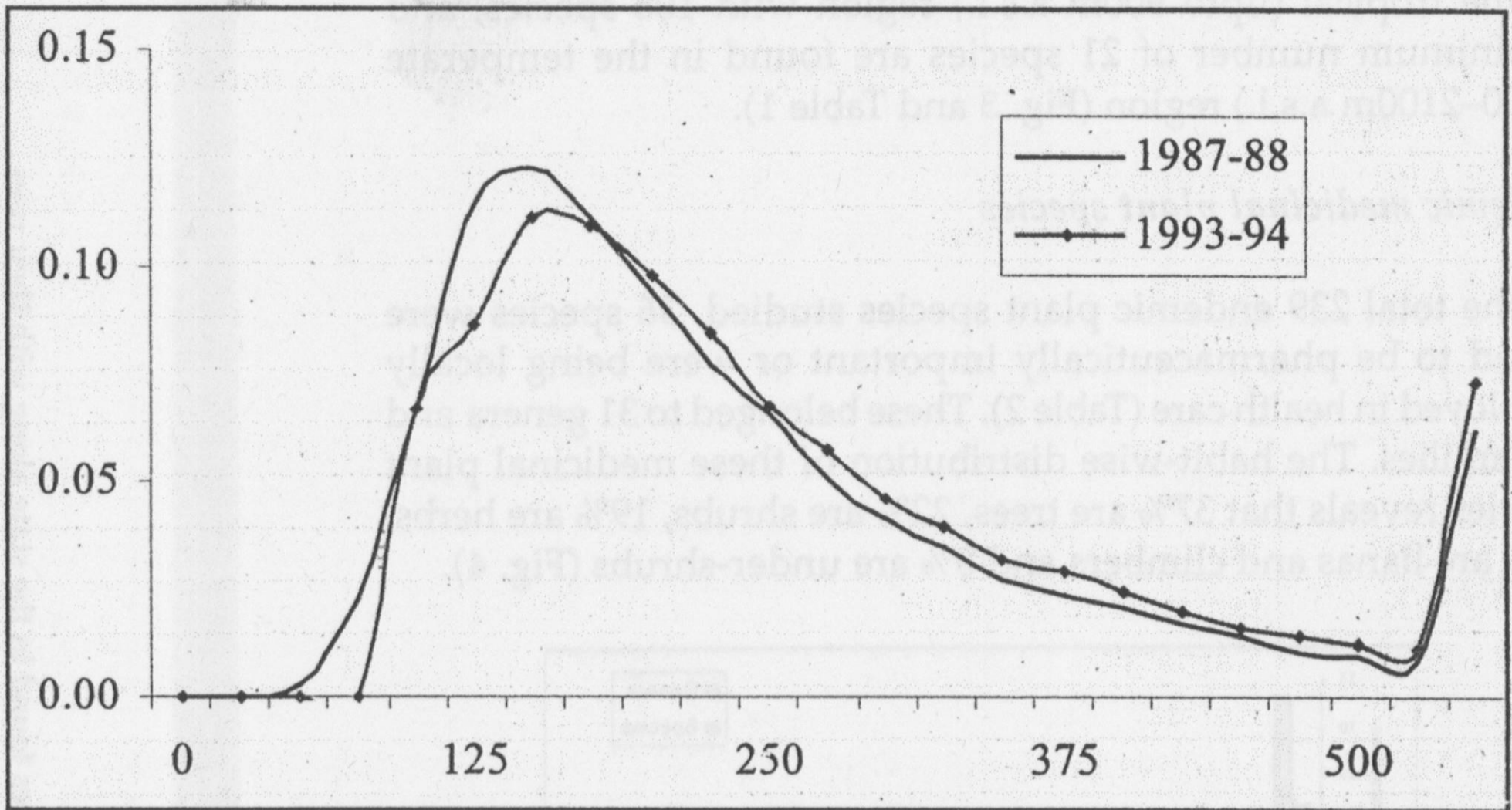
	<i>Bands</i>					
	1	2	3	4	5	6
Rural Regions	20	11	9	6	6	22
Urban Regions	14	10	8	13	12	17

Note: See section 3.1 for the definition of the bands.

Figure 1: Distribution of Population at Different Expenditure Levels (Rural)

Note: The 1993-94 PCTE is in constant (1987-88) prices. See section 2 for details.

Figure 2: Distribution of Population at Different Expenditure Levels (Urban)



Note: We have considered comparable regions only. See section 3.1 for details. See note in Table 17 for definition of bands.

Appendix 1

Abbreviations and State and Region Codes

<i>Code and Acronym</i>	<i>Name of the State and UTs</i>	<i>Regions within a state (Codes)</i>
02 APR	Andhra Pradesh	021, 022, 023, 024
03 ARP	Arunachal Pradesh	031
04 ASS	Assam	041, 042, 043
05 BIH	Bihar	051, 052, 053
06 GOA	Goa	061
07 GUJ	Gujarat	071, 072, 073, 074, 075
08 HAR	Haryana	081, 082
09 HPR	Himachal Pradesh	091
10 J&K	Jammu and Kashmir	101, 102, 103
11 KAR	Karnataka	111, 112, 113, 114
12 KER	Kerala	121, 122
13 MPR	Madhya Pradesh	131, 132, 133, 134, 135, 136, 137
14 MAH	Maharashtra	141, 142, 143, 144, 145, 146
15 MAN	Manipur	151, 152
16 MEG	Meghalaya	161
17 MIZ	Mizoram	171
18 NAG	Nagaland	181
19 ORI	Orissa	191, 192, 193
20 PUN	Punjab	201, 202
21 RAJ	Rajasthan	211, 212, 213, 214
22 SIK	Sikkim	221
23 TND	Tamil Nadu	231, 232, 233, 234
24 TRI	Tripura	241
25 UPR	Uttar Pradesh	251, 252, 253, 254, 255
26 WEB	West Bengal	261, 262, 263, 264
27 ANI	Andaman and Nicobar Islands	271
28 CHA	Chandigarh	281
29 DNH	Dadra and Nagar Haveli	291
30 DAD	Daman and Diu	301
31 DEL	Delhi	311
32 LAD	Lakshadweep	321
33 PON	Pondicherry	331

Note: The State and Regions codes reported above are based on the 1993-94 consumption expenditure survey. For matching of state and region codes in 1987-88 and 1993-94, see Dubey and Gangopadhyay (1998).

Notes

¹ Suryanarayana (1996) has argued that the CPIAL is based on a weighting diagram of 1956–57 consumption pattern. Since the consumption patterns have changed for all population groups over the last four decades, CPIAL might not be a representative index even for agricultural labour.

² It is to be noted that the PCSDP data is available for only about 25 states and union territories out of a total of 32. However, the NSS data is collected from almost entire territory in the Indian Union. For details on the geographical areas not covered in the survey, see Dubey and Gangopadhyay (1998).

³ For further details, please refer to GOI (1979) or Dubey and Gangopadhyay (1998).

⁴ The methodology recommended by the Expert Group (GOI, 1993) is based on Minhas et al. (1988).

⁵ Besides satisfying various poverty axioms, this measure is population sub-group consistent. Recall that we are computing aggregate poverty measures as weighted sum of population sub-groups, state and NSS region.

⁶ Observe that these states had poverty incidence lower than the all India average.

⁷ In 1987–88, the NSSO had divided the entire country into 77 agro-climatic regions. In 1993–94, there were 78 such regions. However, in 1993–94 one NSS region in Jammu and Kashmir could not be surveyed. Consequently, there were 77 NSS regions surveyed in both the rounds.

⁸ Dubey and Gangopadhyay (2002) have shown that there is first order stochastic dominance in the expenditure distribution in both rural and urban sectors.

⁹ For the description and identification of regions, see Dubey and Gangopadhyay (1998).

¹⁰ See the Appendix for the region and state codes.

¹¹ Dubey and Gangopadhyay (1998).

Acknowledgement

An earlier version of this paper was presented at a conference organised by the Indian Regional Science Association in October 2001. We wish to thank C. R. Pathak, Ashok Mathur, A. C. Mohapatra and participants in the conference for valuable suggestions. We also thank Smita Das for her excellent research support. Usual disclaimers apply.