

A decorative border in blue ink surrounds the text. It features a repeating pattern of stylized flowers, leaves, and geometric shapes. The top-left corner has a larger floral motif, and the bottom-right corner has a similar one. The border is composed of several distinct sections: floral sprays, repeating geometric patterns, and stylized floral motifs.

**CHHUTI DAN
BU
LEAVE RULES**

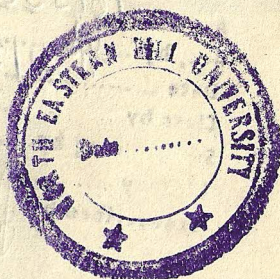


Mrs. C. Hrangchawli, M.A. (Ecc.) Gau.; B.T.

Copyright reserved by the Author

CHHUTI DAN BU LEAVE RULES

First Edition



Finance by :- STATE BANK OF INDIA
HAPPY VALLEY,
SHILLONG

Mrs. C. Hrangchawli, M.A. (Eco.) Gau.; B.T.

478w

Copyright reserved by the Author

344.54012576
HRA;1

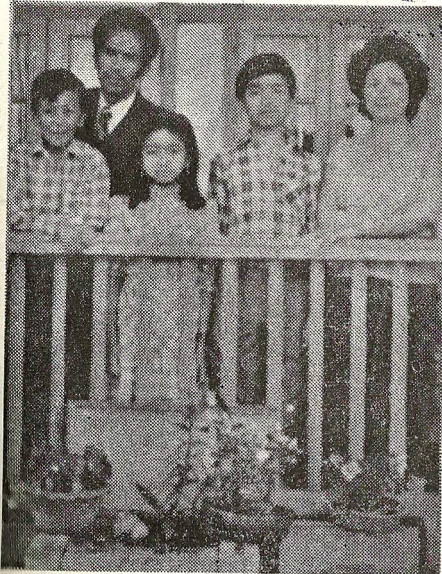
First Edition
November 1985

NFHU Library
 Ac No 161550
 Acc. by 4A
 Date 31/3/89
 Class by
 S...ding by
 C...by
 Transcribed by [Signature]

Finance by :— **STATE BANK OF INDIA**
HAPPY VALLEY,
SHILLONG.

F236
797

C. Hrangchawli



Mr. Rotluanga,
Prof. T. T. Pachhunga,
Miss, Grace Zirsangliani,
Mr. Laldinpuia &
Mrs. C, Hrangchawli



THANGTINCHINGI & LIANCHENGA

He lehkhabu hi ka Pu (Late) Lianchênga
leh ka Pi (Late) Thangtinchhingi
hriat reng nâna ka buatsaih a ni.
Pu Lianchênga hi Mizo Pasaltha hming-
thang Chawngbawla, Chhakchhuak
(Taihlung) fapa naupang ber a ni.



CHIEF SECRETARY
GOVERNMENT OF MIZORAM
AIZAWL

Pi C. Hrangchawli'n "CHHUTI DAN BU"
Mizo tawnga a buatsaih hi, Saptawng chhiar
thiam lo sawrkar hnathawkte leh hetiang thu
ngaihventute tan a tangkai hle in a beisei awm
a ; Saptawng thiamte tan pawh tanpuitu tha tak
a ni ngei ang.

Sawrkar hnathawk tam tak te'n he dan
hi an hriat chian loh avangin harsatna an tawh
phah fo thin. Office-a he dan lam khawihute
thenkhat te ngei pawhin dan an hriat tawk loh
avangin hnathawktute tan harsatna an siam-sak
mek bawk.

He lehkhabu hian, chhuti-a kal dan lo
awm tanna bul chhuichhuak in, sawrkar hna-
thawkte tan nitin a hman tur a tarlang a. Hriat
tul tak tak thil thenkhat te nen. Chuvangin
lehkhabu tangkai leh hlu tak a nih ka beisei.

Pi Hrangchawli'n he lehkhabu a buatsaih
hi lawmawm ka ti tak zet a ni.

Dated Aizawl,
the 22nd October, 1985

Lalkhama
Chief Secretary
Govt. of Mizoram

Bible Verses

Tin, taksa tihluma, thlarau tihlum thei lotute
chu hlau suh ula; Gehenna-a thlarau leh taksa
tiboral theitu erawh chu hlau zâwk ang che u.

Matt 10 : 28

Fel lo taka dehchhuah tam tak ai chuan
Fel taka dehchhuah tlêmtê a tha zâwk.

Thuf 16 : 8

Miin khawvêl hi apumln nei sela, a nun chán
sl sela, a tân engnge sâwt ang ?

Matt 16 : 26



P.K. Lahiri

**ACCOUNTANT GENERAL
MEGHALAYA, ARUNACHAL
PRADESH & MIZORAM
SHILLONG-793001**

Dated 13.12.1985

I am glad to note the effort put in by Smti C. Hrangchawli to bring out this book on Leave Rules. This is a translation in Mizo language of the Central Civil Services (Leave) Rules, 1972 which apply to the employees of Mizoram.

Though for authorised version, one would have to refer to the standard English editions, this volume would be of considerable help to Mizoram Government servants in their day-to-day working.

P. K. Lahiri.

**Accountant General (Accounts)
Meghalaya, Arunachal Pradesh
& Mizoram, Shillong-793001**

*The Coward never starts,
The weak die on the way,
Only the strong Comes through.*

Ignorance of law is no excuse.

*Judge by what a person is,
rather than by what he looks like.*

Charity begins at home

NORTH EASTERN CIRCLE
SHILLONG-793001.



T. K. TOCHHAWNG

ADDITIONAL POSTMASTER GENERAL

Sawrkar hnathawkin dan kan hriat tawk lohna avangin chhuti tamtak leh pawisa tamtak kan hmuh theih tur kan chan phah thin a. Dan thuah hian chhuti la duhtu leh a phal theitu tana luhai thlak tak tak a awm fo thin a. Hetia Pi C. Hrangchawli'n Chhuti Dan Bu (Leave Rules) kan Mizo tawng ngeia kimchang taka entirrate leh sawfiahnate nen thlapa a rawn siam hi a ropui hle in ka hria a. Tin kan hnam, Zofate ti changkangtu ropui tak pawh niin ka hria.

Heng dante hi Central Civil Sawrkar hnuaia thawk zawng zawng-te tan an ni a. Account nei hran P & T Department a mite tan pawh heng dante hi an tangkaiin an in ang vek a ni. Junior Accounts Officer (P & T) exam zawhna leh chhannate pawh pek vek an ni.

Tin, hetia Sawrkar hnathawktu hotu lian emaw, a te emaw, mipuite min ti luhai tam bertu G.P, Fund te, Pension dante leh Chhuti dante zotawng ngeia han rawn mai theih tura kimchang taka a han buatsaih hi keini zofate tan vanneihthlak tak leh hnam chang kang zawkte kan phak lohna a min phuhruktu ropui tak niin ka hria. Heng dante hriat hi Sawrkar hna chelhtu tan thil tangkai tak leh tul tak a ni tak meuh a. Sawrkar hnathawk mimal tinten kan neih theuh a, taima taka kan chhiar theuh pawh a duhawm hlein ka hria.

T. K. Tochhawng
22.11.85

AMERICAN BIBLE SOCIETY
1000 O'CONNOR ST.
NEW YORK, N. Y.

Bible Verses

Lalpa in Pathian chu in thinslung zawng zawngin
in rilru zawng zawngin, in chakna zawng zawngin
in hmanganih tûr a ni.

Deut 6 : 5

A nu pum ata a lo chhuaha saruaka a lo kal
ang bawk khân a kal leh ang a, a thawhrim rah eng-
mah a chhawm lo vang.

Thuhritu 5 : 15

Chawh ni hi thianghlim taka serh tûr a ní tih
hre reng rawhnang pawhin; i fapa pawhin, i
fanu pawhin, i bawipa pawhin, i bawinu pawhin, i ran
pawhin, i ina hnam dang pawhin.

Ex 20 : 8-10



OFFICE OF THE
ACCOUNTANT GENERAL
MEGHALAYA, ARUNACHAL PRADESH
& MIZORAM
SHILLONG-793001

Dated 25. 11. 1985.

Sawrkar hnathawkte'n tih makmawha kan hriat tur kan hriat tawk thin lohna avangin mi tam takin chhuti lak thuah hian kan buai phah fo thinin sum tam tak kan chan thin a. Hetia Pi C. Hrangchawli'n Chhuti Dan Bu Zotawng ngeia a han siam hi a ropui hlein keini Zofate hi min chawikang sang hlein ka hria.

Amah hi Mizoram Chhimbial hmeichhe M A. pass hmasa ber a ni a. Mizoram pumpuia Sawrkar mite tana hmeichhiate zinga hetiang lam thil tangkai tak siam chhuaktu a han ni hmasa leh ta mai hi a ropui leh zualin ka hria a Heng lehkhahu hlu tak tak - G. P. Fund leh Pension Dan bute, Chhuti Dan Bute hi chhang-chhenu ni ve tho chung a taima taka a buatsaih a ni a. A taihmakna hi a entawntlak em em a ni.

Chhuti hi sum tak nen a inkaihnawih thin avangin dan hi Chiang taka hriat a pawimawh em em a. Chhuti latu emaw a phalsaktu emawin dan hriat chian lohna avangin sum tam tak miin an chan phah thin a. Mahni hnathawhna khawp han hriat mai hi chu a har love, mahse dan hi hnathawhnain a zir viau te a nih si loh chuan leh a zir tura in pe bikte emaw, a ngaihsak bikte emaw tan lo chuan tihsual awi tak a ni bawka a.

Tin, Sawrkar dan hi lo danglam zeuh zeuh chang awm mahse a tum bulpui ber hi chu a danglam chuang lova. Heng practical sums te fel taka a han entir leh sawifiah-nate hi an Chiang hle a. Sawrkar hnathawk tute pawhin ngun taka kan zira kan hriat a tul hlein ka hria.

H. Vanlalhluta, I.A. & A.S.
Assistant Accountant General,

Bible Verses

**Khuangtê leh lâmin amah chu fak ula ;
Tingtang chi hrang hrang leh phênglâwnghin amah
chu fak rawh u.**

Sam 150 : 4

**Kei leh ka chhûngte erawh hi zawngin LALPA
rawng a nia kan bâwl dawn ni ”**

Josua 24 : 15

**In hmâ-ah nunna leh thibna, malsâwmna leh
âncbia ka dah tih tânah hian in chungchâng thua
hretu atân lei leh vân ka ko a ni.**

Deut 30 : 19

THUHMAHRUAI

Accountant General te phalna leh duhsaknate a zârah leh Mizorama sawrkâr hnathawk tam takte ngenna angin ka lo zir leh ka lo chhiar tawhte ațangin nikum 1984 khân G.P. Fund leh Pension Dan Bu ka han buatsaih tawh hnuah tûnah Chhuți Dan Bu (Leave Rules) ka han peih fel leh thei ta hi Pathian chungah ka lâwm êm êm a ni.

Hêng Pension, G. P. Fund leh Chhuți dante hi mahni țawngin tlâng mi dangte chuan an la nei ve lo va. Tin, dante hi thawnthu bu emaw buatsaih ang ngawt a nih loh avângin hun leh tha a heh hle a.

Sawrkâr dân hi mahni thawh theihna ngawr ngawr han hriat mai hi chu a har lo va. Mahse, dân chi hrang hrang hriat hi min tifingtu a ni a, a zahawm a, min ti tlângnêl a, mahni in rin ngam tâwkna (Self Confidence) min pe a, hnathawhte pawh a ti nuam danglam bik a. Dân hriat hi midangte kan puih theihna ropui tak a ni bawk.

Sawrkâr hnathawkin mahni leh chhûngten hrisêllohna leh harsatnate tawh châng a lo awm lo thei lo va. Chûng ang hunah chuan dân hriat hlâwkzia a lo lang țhîn a ni.

Tin, mahni hlawh chhût thiam hi thil țul tak a nih bâkah, hlawh hi chhuți nêl a in kaihnawih tlatna lai a awm a. Chuvângin, mahni hlawh chhût thiam dante pawh ka han telh a ni. Mahni hlawh chhût thiam hi chhuți lâk pawha pawisa hlauh lohna a ni. A châng chuan, chhuți aia pawisa ruh theih dân hriat duh hunte pawh a lo awm fo bawk țhîn si a.

Khawpui leh thing tlânga zirtirtu hnathawk tamtak tân pawh hun bik nei (vacation) chhuṭi bâkah chhuṭi dangte chiang kuang taka neih ve theih a nih ziate pawh ngun taka sawi fiahnate nêh telh an ni bawk.

He lehkhabu buatsaih naah hian ka pasal Prof. T. T. Pachhûngan Sûl min sutpui avângin a chungah ka lâwm êm êm a.

Tin, Mr. S. P. Biswas, S. A. S. Accountant Generals office (Audit) a miin nasa tak leh ṭhahnem ngai taka min ṭanpui avângin a chungah ka lâwm hle bawk a ni.

A dawt lehah chuan, Upa Chhâwnkhama (Z. P, M. B. K) lehkhabua a lo chan theihna tûra nalh taka khâwla min chhutsak avâng leh kawng hrang hranga min ṭanpuina avângin a chungah ka lâwm tak meuh bawk a ni.

Dt. 30. 11. 1985

C. Hrangchawli
Author.

Address :—

Mrs. C. Hrangchawli
L. G. R. Sweet Home,
Nongthymmai
Shillong — 793014
Meghalaya.

CHHUTI DÂN BU

(Leave Rules)

A CHHUNGA THU AWMTE

Bung	Pages
1. Chhuti kal dan thlir lêtna	... 1— 4
2. Central Civil Services (Leave Rules) 1972 tlângpuite.	} ... 4 - 12
3. Chhuti hmanlohte aia pawisa ruh dân entirrate nê	} ... 12— 31
4. Hlawhnel chhuti—Vacation depart-ment a mite tân-entirrate nê	} ... 32 - 40
5. Chhuti awmdân tlângpul (General Conditions)	} ... 41— 56
6. Chhuti pêk dân (Grant of Leave)	... 57— 64
7. Central Civil Services (Leave) Rules 1972 anga chhuti chi hranghrang-te entirrate nê.	} ... 64 - 103
8. Zirna sâng tak avânga chhuti (Study leave)	} ... 103—121
9. Thu harsate (Comments)	.. 121—131
10. Transfer laia sawrkâr dang leh department dang nêna chhuti in siamrem dân	} ... 132 - 151
11. N E. H. U. (North Eastern Hill University) Chhuti neih dân chi hrang hrangte	} ... 151—167
12. Zawhna leh chhanna, entirna chi hrang hrang (Practical sums) 18 te	} ... 168—243

Bung	Page
13. Form Chi hrang hrangte243 - 270
14. Casual Leave leh Special Casual Leave	...270 - 286
15. Leave Account buatsaih dân-entirna te nê	} ...287 - 295
16. D.A., A.D.A., Adhoc. D.A. leh a dangte chhût dân	} ...296 - 334
17. Mahni hlawn chhût dân-entirna te leh sawifahnte nê	} ...334 - 360
18. Hlawn (Scale) kal dân361 - 364
19. Chhut chhûnga thu thar belhte	---365 - 363
20. Thumal hrang hrang hman dante	...369 - 387

1. Chhuti awmban, thangpu (General Conditions)	41 - 55
2. Chhuti pûk dân (Grant of Leave)	57 - 64
3. Central Civil Service Leave	64 - 103
4. Rules 1972 nga chhuti chhûng hrangte te entirna nê	103 - 131
5. Nira sang tak avanga chhuti (Study leave)	131 - 131
6. Thu harsite (Comments)	131 - 131
7. Transfer leis sawikar dang leh department dang nê chhuti	131 - 131
8. in sistem dân	131 - 131
9. N. E. H. U. (North Eastern Hill University) Chhuti neih dân chhûng hrang hrangte	131 - 167
10. Zawba leh chhûngte entirna chhûng hrang hrang (Practical rules) te	168 - 243

BUNG - I

CHHUTI KAL DÂN THLIRLÊTNA (Leave Rules — A Retrospect)

F. R. kan tih thin Fundamental Rules hi ni 1. 1. 1292-ah tihchhuah a ni a. He F. R. hi tihchhuah a nih hmâ chuan Sawrkâr hnathawk zawng zawngte chu Civil Service Regulations chhânga chhuṭi kal dân Leave Rules hnuaiah awm vek a ni a. Civil Service Regulations ah chuan chhuṭi kal dân chi hnih, European Service Leave Rules leh Indian Service Leave Rules an awm a. F. R. ni 1. 1. 1922 a tihchhuah a nih hian European Service Leave Rules chu Special Leave Rules in thlâk a ni a, Indian Service Leave Rules erawh chu Ordinary Leave Rules in thlâk a ni ve thung a.

Fundamental Rules a chhuṭi awm dân chu Revised Leave Rules 1933 in, ni 14. 12. 1933 ah thlâk a ni leh a, ni 16. 7. 1931 aṭanga hman lêt phal a ni bawk a.

Revised Leave Rules 1933: A chungâ kan sawi tâk ang khian ni 16. 7. 1931 aṭanga hman lêt theih a ni. Chumi awmzia chu he Revised Leave Rules 1933 hi ni 14. 12. 1933 ah tihchhuah chauh ni mahsela, Sawrkâr hnathawk zawng zawng ni 16. 7. 1931 ni leh a hnu lama hnathawk te tân hman theih tihna a ni. He chhuṭi dân hnuaiah hian chhuṭi chi hnih a awm a. Chhngte chu hng te hi an ni:—

1. Hlawh nei chhuṭi (Earned Leave)
2. Hlawh chhuah ni lo chhuṭi (Unearned Leave)
 - (i) Mimal harsatna avanga chhuṭi (Leave on Private Affairs)

- (ii) Damlohna avânga chhuṭi (Leave on Medical Certificate)
- (iii) Hlawh nei miah lo chhuṭi (Leave on Extraordinary Leave)

Earned Leave hi ni 90 thlenga khâwl theih a ni. Superior Service an tihte tân chuan ni 120 thleng a ni a. Inferior Service te tân chuan ni 30 chauh a ni.

Leave Rules 1949 atangin: First Pay Commission te remruatna angin ni 1.2.1949 atangin 1933 chhuṭi kal dân chu hetiingin siam that a lo ni leh ta a:—

- (i) Earned Leave ni 90 thlenga khâwl theih ni ṭhin kha ni 120 thlenga khâwl theih a lo ni ta a. Chu bâkah Group D ho te tân ni 30 mai ni lovin ni 60 ah tihsân a lo ni leh ta a; kum 10 an thawh hnuah phei chuan ni 90 a ni leh ta a, kum 20 hnuah phei chuan ni 120 lai phal an ni ve ta a.
- (ii) A hlâwma pawisa an pêk ṭhin mai aiah chuan kumtina chhuṭi hlawh chanve neia kal chu phal a lo ni leh ta a. Group D ho te tân chuan kum 20 an thawh hma chuan kum tin ni 15 a ni a, kum 20 hnuah erawh chuan kumtin ni 20 a ni thei ta a.
- (iii) Chhuṭi hlawh chanve neia kal phal ṭhin chu hlawh pum la thei târa tih danglam (commute) ni 180 thlenga phal a ni ta a.
- (iv) Chhuṭi hmuh theih tûr (Leave not due) chu mimal harsatna (private affairs) avang leh damlohna avângin pêk phal a ni leh ta a.

Leave Rules 1955 atangin: Ni 12.9.1955 atangin hetiangin chhuṭi kal dân chu tih danglam a ni leh ta a :—

- (i) Earned Leave chu ni 120 chauh ni lovin 180 thlenga khâwl theih a ni leh ta a.
- (ii) Chhuṭi hmuh theih târ (Leave not due) chu hnathawh theih hun chhâng zawng atân ni 180 atangin ni 360 ah tihsân a ni leh ta bawk a.
- (iii) Chhuṭi hmuh theih târ (Leave not due) damlohna avang chauh va pêk ni ṭhîn kha damlohna avang chauh lo pawhin pêk phal a ni leh ta a.
- (iv) Chhuṭi tih danglam (Commute) theih zât ni 180 ni ṭhîn kha ni 240 ah tihpun a ni leh ta bawk.

Class IV te hnênah, 1957 atangin:— Ni 1.4.1957 atangin Class IV ho, tâna Group D ho ang hi, chhuṭi pêk chungchângah Sawrkâr hnathawk dangte ang bawkin chhuṭi pêk theih an lo ni ve ta a.

Chhuṭi chhânga hlawh (Leave Salary) chhât nân pawh thla 12 emaw, thla 36 chhânga hlawh lâk rual atanga chhât lovin, thla 10 lâk rual atanga chhât phal a ni leh ta a.

Ni 7.9.1968 atang phei chuan, Sawrkâr hnathawktu hlawh hmuh tam thei ang ber (Maximum Scale) chuan Rs. 300 a khâm loh chuan, chhuṭi hma chiaha hlawh chhât nân chuan, hlawhpui chauh ni lovin special pay pawh chhiar phal a ni a. Heta Rs. 300 tih hi ni 1.11.1973 atang kha chuan Rs 600 a ni tawh zâwk bawk a. Ni 1.3.1976 atang phei kha chuan chhuṭi laia hlawh hmuh zât târ chhât nân, Sawr-

kâr hnathawk zawng zawng tân, chhuṭi hma chiaha a hlawh hmuh zât ang khân chhât phal a ni leh ta zél a.

Kan sawi tâk chhuṭi kal dân tlângpui palthumte bâkah, chhuṭi kal dân hnathawktu thenkhat te tân siam an ni bawk a. 1955 September aṭang khân All India Services ho tân chhuṭi dân siam hran a ni a, "All India Services Leave Rules,—1955" tia vuah a ni a. Chu bâkah High Court a roreltute (Judges) tân leh Union Public Service Commission a hnathawktute tân leh Contracta hnathawktu officers te tân siam a ni bawk.

B U N G - 2.

CENTRAL CIVIL SERVICES (LEAVE)

Rules 1972 TLÂNGPUI TE

Ni 1. 6. 1972 hma lamah kha chuan chhuṭi dân leh kalhmang te hi a hlâwm ṭha lovin a darhsarh hle mai a. Revised Leave Rules te khân Hlawh nei chhuṭi (Earned Leave) te, hlawh chanve nei chhuṭi (Half Pay Leave) te, chhuṭi tih dang lam (Commuted Leave) te, chhuṭi hmuh theih târ (Leave not Due) te leh hlawh nei lo chhuṭi (Extraordinary Leave) te a huap a. Mahse hêng bâkah hian Dân pui (Fundamental Rules) leh Dân tê zâwk (Supplementary Rules) a kan hmuh argin hêng dânte hian belh an lo ngai ta a. Chângte chu Nau neih nâna chhuṭi (Maternity Leave) te, Damdawiin awm nâna chhuṭi (Hospital Leave) te, theih lohna chung chuang vanga chhuṭi (Special disability Leave) te, Zirna sâng tak avânga chhuṭi (Study Leave) te an ni a. Chuvângin chûng dânte chu lâk khâwma siam fel a lo ngai ta hle a.

Price—Rs. 60/-

V. P. P. Extra.

**Printed at Khasi Jaintia Press, Mawkhar,
Shillong-793001, Meghalaya.**